



Reflections

Crystal Symphony • Cruise 2221, No. 12

Sunday, September 16, 2012

At Sea, en Route to

New York, USA

Sunrise: 7:30am • Sunset: 8:08pm

The World Of Waves — Breakers and Swells

Landlocked children born into the interior back countries around the world can only dream of vast stretches of sea, where waves dance across the watery expanse like a well-rehearsed ensemble.

Those born near the great lakes and oceans are, in some ways, more fortunate. As the summer sun browns their tiny shoulders, they dash in and out of the surf letting their heels burrow deeper into the rough sand with each new wave, or float carefree on the crests. They cast their tiny, crudely-built sailboats into the outgoing tide, imagining their crafts will someday arrive in a distant land where the language is strange, the people exotic.

In time, these children acquire the sought-after skill of skimming well-worn rocks across the water's top. Courage allows them one day to dive beneath the waves and explore the mysterious depths, or hoist a real sail and follow in the wake of their childhood boats.

But what do these admirers really know about these magical works of nature that have traveled so far to provide for their pleasures? Let's explore.

Sea Facts

The sea covers nearly three-fourths of the earth's surface, much to the delight of the throngs who have clung to her shores since man first walked the earth.

The average depth of the oceans is more than two miles. The average ocean waves are between 150 and 300 feet in length. Knowing that Crystal Symphony is approximately 800 feet long and nearly 100 feet wide, you should be able to roughly calculate the length of the waves that wash across her bow as you sail along.

The length of an ocean wave can literally double, or more, during a storm. And ocean waves move at an incredible speed, sometimes measuring 20 to 40 miles per hour. However, if you tossed a wine cork into the sea (which you shouldn't do, to be ecologically responsible), it would remain virtually in the same spot as the waves passed right through.

The term "crest" refers to the highest part of the wave, while its "trough" is the lowest part. To calculate the height of a wave, a marvelous pastime for surfers and seamen alike, you simply measure the distance between its crest and its trough. The length of the wave is measured from one crest to the next, and that measurement is referred to as the "wavelength." Note that a wave breaks and a swell does not.

continued...

Evening Dress Code: Informal

Ladies: cocktail party dress or pantsuit

Gentlemen: Jacket & slacks, tie optional

Today's Notices

Crew Fire and Lifeboat Drill

Today, the officers, staff and crew of Crystal Symphony practice safety procedures as they participate in a crew emergency muster at 10:00am. Guests are not involved in this drill, however, please note that guest services are slightly interrupted for the duration of the drill..

Passport Reminder

We kindly remind all guests disembarking in New York on September 19 to pick up your passports at the Reception Desk from 10:00am tomorrow, September 17.

Magic Castle at Sea

Crystal Cruises & the Magic Castle present Master Magician **Jonathan Levit** at 5:00pm, 6:00pm & 7:00pm in LUXE. Please collect your tickets in the Library. **Tickets are first come, first served and limited to 20 guests per show. Limited to two tickets per guest, please.**

Entertainment Tonight

At 7:00pm and 8:30pm in the Galaxy Lounge, Crystal Cruises proudly presents Broadway vocalist **Michel Bell** and pianist **Catherine Matejka** in the Galaxy Lounge.

Greetings For Jewish New Year 5773

Captain Ralf Zander, the officers, staff and crew of Crystal Symphony extend to our guests of the Jewish faith Best Wishes for a **Happy New Year.**

Time Change Reminder

As Crystal Symphony sails into a new time zone tonight, we remind you to set your clocks and watches **BACK One Hour** before retiring this evening, Sunday, September 16.

continued from front page ...

How Are Waves Formed?

Most ocean waves are formed by winds that move across the ocean surface mile after watery mile. As the winds shift, these waves can travel from several different directions and form a changeable pattern. It's amazing, yet true, that the seemingly endless waves that ripple past your ship's hull were probably created several hundred miles away, and will more than likely continue to roll past you for hundreds more. Their journeys are usually very long and are often undisturbed by landmasses, let alone luxury liners.

Three factors interplay to create the actual waves: the force of the wind, the duration of the wind, and the amount of uninterrupted sea over which these winds continue to blow. When the winds blow at a rate faster than the waves are traveling, you'll notice that the waves soak up the wind's energy and continue to grow in size. That's the reason that waves in the Pacific Ocean are generally larger than those in the Atlantic, for they have greater distances over which to build up energy.

One lazy afternoon, while on a palm-fringed island, you might bet an unsuspecting companion that you could precisely measure the exact height of the incoming waves without any sophisticated equipment. Once the bet is on, simply step back a few paces until the breakers' crests line up with the horizon. Then estimate the depth of the trough of the wave by observing the level of the returning surf. Therefore, knowing your own height, you can predict the relative height of any given wave with considerable accuracy, or at least well enough to win the bet because your buddy couldn't possibly have a better measuring technique or instruments in his beach tote.

And besides, by the time you've finished arguing the issue, the wave will have disappeared back into the mighty ocean unable to prove you wrong. So, slather on some sunscreen, sink deeper into your colorful beach towel, and let the day drift lazily by.

- Karyn L. Planett

Captain Ralf Zander and the Crystal Family wish a...

Happy Birthday to:

Mrs. Joanne Antoniou
Mr. Curtis Eyestone
Mr. John Margolis
Mr. Stephen Mayerson
Ms. Carol Wiest

Best Wishes!

Rosh Hashanah, The Jewish New Year

Rosh Hashanah, the Jewish New Year, begins on Sunday evening, September 16, 2012. Rosh Hashanah marks the first day of the Hebrew month called Tishri, and according to Jewish tradition, the holiday celebrates the creation of the world. The Hebrew Bible refers to this day as "The Day of Remembrance."

The concepts of creation and history are central to this holy day, when worshipers are called upon to recall their deeds of the past year and to commit to higher levels of personal responsibility.

In Biblical times this observance was known as Yom Teruah, "the day of sounding the Shofar." The Shofar, or ram's horn, is still the most unique symbol of Rosh Hashanah. Its piercing tones are an echo of history and a call to conscience, resonating with many layers of spiritual and personal meaning.

Rosh Hashanah Services will be held aboard Crystal Symphony on Sunday evening, September 16 at 5:00pm in the Hollywood Theatre and on Monday afternoon, September 17 at 1:15pm in the Hollywood Theatre. Rabbi Morris Hershman will lead the services and provide background of the various prayers and rituals. The shofar will be sounded on Monday afternoon. All guests are welcome to attend these services.

Casual Dining Tonight

The Lido Café extends its hours and offers a special limited à la carté menu. No reservations are required for the Lido Café's **Casual Dining** and everyone is welcome to this dining experience.

On casual dining evenings in the Lido Café, a more relaxed attire is accepted, such as casual dresses and pantsuits for ladies, and sport shirts and slacks for gentlemen. Ties and jackets are not required. Shorts, bathing suits, and baseball caps are not permitted after 6:00pm.

Experience Casual Dining tonight from 7:00pm to 9:00pm at the Lido Café, Lido Deck 11, aft.



CRYSTAL

CASINO

Join us for Bingo

Today in the Starlite Club:

11:00am Bingo cards on sale

(Bingo starts at 11:15am)

Hosted by Crystal Casino



Distribution of Guest Lists

Practicing the Crystal Clean Difference

Everyone at Crystal takes their responsibility to keep our oceans and environment "Crystal Clean" very seriously. Our goal is to continually improve upon our environmental practices and minimize our impact on this fragile earth we call home.

If you are a frequent guest of Crystal Cruises, you know that we traditionally provide a Guest List to each stateroom for every cruise. Based on feedback provided by our guests, we have decided to discontinue delivery of the Guest List to every stateroom in an effort to reduce the amount of paper consumed during cruises. Over the years, we have discovered that not all of our guests wish to take home the Guest List. This does not mean, however, that the list is no longer available. Instead of delivering one to every stateroom, the Guest List will be available on request. Should you desire a Guest List for this cruise, we want to encourage you to stop by and pick one up at the Reception Desk on Deck 5. Or, if you would like one delivered to your stateroom, you may call the Reception Desk, and we will be pleased to deliver one to you.

Distributing Guest Lists to only those guests who wish to keep them as a memento of their cruise is just one of the many ways in which we can help reduce waste and continue expanding on our environmentally-friendly initiatives. Crystal Cruises wants to thank you for your contribution to our environmental efforts.

This cruise's Guest List is now available at the Reception Desk, Crystal Deck 5.

Galley Tour Today

Have you ever marvelled at how a small army of waiters, chefs and sommeliers are able to create the culinary masterpieces they do day after day? Meet Executive Chef **Markus Nufer** today at 4:30pm just outside the Crystal Dining Room, for a tour of Crystal Symphony's Galley.

Smoking Policy Reminder

Crystal Cruises kindly asks guests to observe the non-smoking areas, which have been created for the comfort and enjoyment of everyone on board. As stated in our Cruise Atlas and in the embarkation issue of Reflections, smoking is not permitted on penthouse and stateroom verandahs. We thank you for your consideration in making Crystal Symphony a more comfortable environment for all guests.

Guest Laundry Reminder

In fairness to your fellow guests, we ask that you kindly keep track of your laundry and remove it in a timely manner so that others may utilize the facilities. Thank you for your kind attention.



INFORMAL PORTRAITS TONIGHT BEFORE & AFTER DINNER.

NO APPOINTMENT NECESSARY
NO OBLIGATION

CRYSTAL PLAZA DECK #5

SMILE.

Teeth whitening service available at the spa!

FAST - EASY - SAFE - EFFECTIVE

Just \$149

Ask for your free smile consultation.

Look years younger, in just minutes!

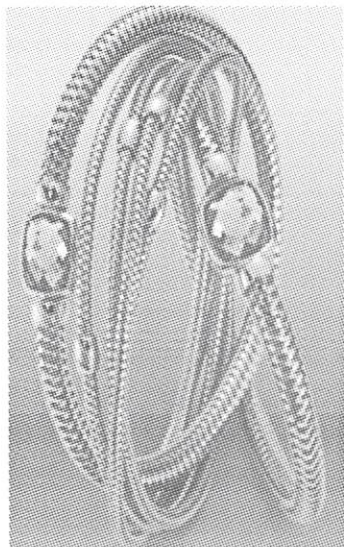


Crystal Spa & Salon

Shipboard credits may be used on all Spa and Salon Services.
For more information, please call 3875 or visit the Spa on Sun Deck 12 Aft

SHOPPING ON BOARD

Today, in **FACETS** at 11:30am
Roberto Coin Trunk Show



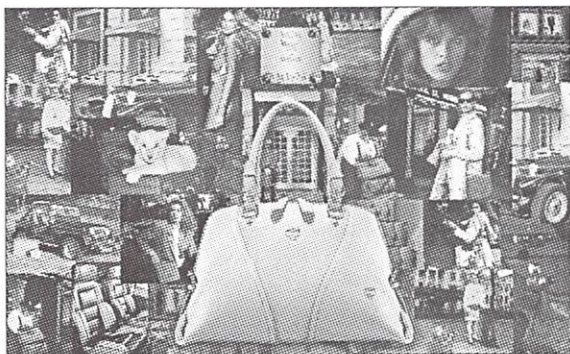
Come and join David Waggoner, our Roberto Coin trunk show specialist, for an informal chat in Facets to find out more about the most popular Roberto Coin jewelry collections. After the chat, David will be available for answering your questions about the jewelry industry and will share his thoughts on how to buy fine jewelry from an insider's perspective.

Roberto Coin Trunk Show available in Facets this cruise only.

FACETS

Shipboard credits may be applied to all retail purchases.

SHOPPING ON BOARD



MCM – “Mode Creation Munich”

A legend fashioned in the historic German city of Munich in 1976. MCM's roots lie in the artisanal expertise of German craftsmanship, constantly redefined by modern lifestyles. MCM also reflects the roman numerals '1900', symbolizing the new concept of travel at the turn of the 20th Century. Available in...

Crystal Collection

Shipboard credits may be applied to all retail purchases.

Last Few Days to Save on Your Next Crystal Cruise...

**for our guests disembarking
in New York!**



Please keep in mind you do not have to wait in line to start your booking; simply complete and return the **Onboard Self Booking Request form (you can find one inside your stateroom 2013/2014 Cruise Atlas or at the Cruise Consultant Nikki's desk)** to the Reception Desk or to the Cruise Consultant. A fully refundable deposit will be charged to your shipboard account and all further cruise arrangements will be followed up by your travel agent at home, who receives full credit for your booking.

Please note the last time to turn in a completed Self-Booking Cruise Request Form is 8:00pm on Tuesday, September 18, for those guests disembarking in New York.

Daytime Activities

Good Morning

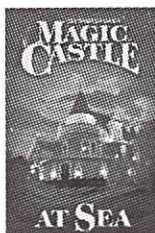
6:00am – 12 Noon	“The Morning Show” with your hosts Cruise Director Paul McFarland and Patricia Kent.	TV Channel 27	
7:30am★	Morning Walk on Water & Nordic Walking with Fitness Director Neil. <i>(weather permitting)</i> .	Promenade Deck Aft	7
8:00am★	Fitness Class: Stretch with Fitness Director Brian. <i>(weather permitting)</i>	Starlite Club	6
8:15pm	Catholic Mass is celebrated by Reverend Michael Lawlor	Hollywood Theatre	6
8:30am – 12 Noon, 1:30pm – 6:00pm & 7:30pm – 11:00pm	The Library Is Open. Check out books, DVDs & CDs for your enjoyment during the cruise. Sign up for indoor games like chess, scrabble, etc.	Library	6
8:45am★	Fitness Class: Spin with Fitness Director Neil. <i>(weather permitting)</i>	Fitness Center	12
9:00am	Captain’s Update. The latest weather and navigation information.	PA System & Ch. 52	
9:05am★	Pilates with Instructor Jennifer Crane. <i>(weather permitting)</i>	Palm Court	11
9:15am★	CU@sea Class: Excel Pivot Tables Using Office 2010 with Instructor Chip Adam. <i>(Space is limited; pre-registration required)</i>	The Studio	6
9:15am	Interdenominational Service is celebrated by Reverend Michael Lawlor.	Hollywood Theatre	6
10:00am – 11:00am	Beginner’s Bridge Lesson with Instructor Susan Carter. At this time, the Bridge Lounge is reserved for lessons only. Thank you.	Bridge Lounge	6
10:00am	Crew Emergency Muster. Guests are not involved in this drill, however, please note that guest services are interrupted for the duration of the drill.	Ship Wide	
10:00am	Crystal Visions Enrichment Program. Destination Lecturer Ken Rees presents “The Atlantic Challenge – From Columbus to Concorde” and tells the story of the challenges and triumphs of one of the worlds mightiest oceans. <i>As a courtesy to your fellow guests, No Saving of Seats please. (This lecture is broadcast live on TV Channel 29; Rebroadcast on TV Channel 28: 12 Noon to 4:00pm.)</i>	Starlite Club	6
10:15am★	CU@Sea Class: The Power of Cloning Using Photoshop Elements 9 with Instructor Chip Adam. <i>(Space is limited; pre-registration required)</i>	The Studio	6
10:45am – 11:30am	Art of Napkin Folding, repeat with Activities Hostess Mari.	Lido, Strbd side	11
11:00am★	TaylorMade Golf Clinic with PGA Golf Teaching Professional John Clark. “Q & A session.”	Hollywood Theatre	6
11:00am	Acupuncture & Jou Herbs Seminar. Come and listen to this informative seminar about the healing properties of Chinese herbs and Acupuncture with Dr. Spencer Shimabukuro.	LUXE	6
11:00am★	Paddle Tennis Open-Play with Fitness Director Brian. <i>(weather permitting)</i>	Wimbledon Court	12
11:00am	BINGO hosted by the Crystal Casino. <i>Please note appropriate daytime dress code is appropriate attire for Bingo; no robes. (Game starts at 11:15am)</i>	Starlite Club	6
11:00am – 12 Noon	Intermediate Bridge Lesson with Instructor Susan Carter. At this time, the Bridge Lounge is reserved for lessons only. Thank you.	Bridge Lounge	6
11:15am – 12 Noon★	Berlitz Spanish Language, AM Class with Instructor Maribel Morales.	The Studio	6
11:30am – 12:30pm	Brian Donnelly plays the Crystal Piano for your midday cocktail pleasure.	Crystal Cove	5

★ Indicates Creative Learning Institute Activity.



Good Afternoon

12 Noon	Team Trivia hosted by Daniel of the Crystal Ensemble.	Starlite Club	6
12 Noon – 1:00pm	Free Gaming Lessons. Get all the tips from our experts.	Crystal Casino	6
1:30pm	Crystal Visions Enrichment Program. Special Interest Lecturer Nigel West presents "The Special Relationship: The White House and Ten Downing Street." <i>As a courtesy to your fellow guests, No Saving of Seats please.</i> (This lecture is broadcast live on TV Channel 29; Rebroadcast on TV Channel 28: 4:00pm to 8:00pm)	Starlite Club	6
2:15pm *	CU@sea Class: iPad 2 Having Fun with Photos Lecture, (repeat) with Instructor Chip Adam. <i>(Space is limited; pre-registration required)</i>	The Studio	6
2:15pm – 3:00pm	Beginner's Needlepoint Get-Together with Activities Hostess Mari. Please bring your kit.	Palm Court, Strbd side	11
2:15pm – 4:15pm	Duplicate and Social Bridge with Instructor Susan Carter. At this time, the Bridge Lounge is reserved for bridge games only. Thank you.	Bridge Lounge	6
2:30pm	Movie: The Intouchables. After he becomes a quadriplegic from a paragliding accident, an aristocrat hires a young man from the projects to be his caretaker. Subtitled; R; 1:52.	Hollywood Theatre	6
2:30pm	Complimentary Dance Class with Instructors Adam & Patricia and the Ambassador Hosts. Today's class: <i>Swing. (Beginners welcome and no partner required. Weather permitting).</i>	Starlite Club	6
3:00pm *	Odyssey Art at Sea Masterpiece Program with Instructor Agnes Vaccarelli. "Putting Watercolor Pencils to Work" – Create your very own "Love Puffin".	Lido Café, Port side	11
3:00pm	Table Tennis Open-Play with Fitness Director Neil. <i>(weather permitting)</i>	Horizon Deck Aft	8
3:15pm *	TaylorMade Golf Clinic with PGA Golf Teaching Professional John Clark. "Have your tempo and Swing Speed checked with the Swing Speed Machine," Part 2 (Inclement weather location: Deck 11 landing, outside Fantasia)	Nets	12
3:15pm *	CU@sea Class: Fun with iPhoto Using Mac OS X, Part 2 with Instructor Chip Adam. <i>(Space is limited; pre-registration required)</i>	The Studio	6
3:30pm	Crystal Visions Enrichment Program. Special Interest Lecturer Jay Christofferson presents "Deep Sea." Learn about the biology and geology of this amazing environment and why these findings have caused biologists to rethink some previous theories. <i>As a courtesy to your fellow guests, No Saving of Seats please.</i> (This lecture is broadcast live on TV Channel 29; Rebroadcast on TV Channel 28: 8:00pm to 12 Midnight)	Starlite Club	6
3:30pm-4:30pm	Afternoon Tea Time serenaded by the Ginger String Quartet.	Palm Court, Strbd Side	11
4:00pm *	Fitness Class: Abs with Fitness Director Brian. <i>(weather permitting)</i>	Fitness Center	12
4:30pm *	Fitness Class: Stretch with Fitness Director Neil. <i>(weather permitting)</i>	Fitness Center	12
4:30pm	Galley Tour with Executive Chef Markus Nufer.	Crystal Dining Room	5
4:45pm – 5:30pm *	Berlitz Spanish Language, PM Class with Instructor Maribel Morales.	The Studio	6
5:00pm	Evening Service for Rosh Hashanah , the Jewish New Year, will be led by Rabbi Morris Hershman . All guests are invited to attend.	Hollywood Theatre	6
5:00pm	Friends of Bill W. meet in...	Lido Café Aft	11
5:00pm	Afternoon Walk on Water & Nordic Walking with Fitness Director Brian. <i>(weather permitting)</i>	Promenade Deck Aft	
5:00pm	5 O'Clock Funnies LIVE! Comedy clips hosted by Cruise Director Paul McFarland. Prize Trivia at approximately 5:30pm.	TV Channel 27	



5:00pm, 6:00pm & 7:00pm • LUXE Tiffany Deck 6, Midship

Magic Castle at Sea

Featuring Master Magician **Jonathan Levit**

This exclusive performance is limited to only 20 guests per show.

Please collect your ticket from the Library. Tickets are first come, first served.

Limited to two tickets per guest, please.

* Indicates Creative Learning Institute Activity.



Evening Entertainment Choices

Dress Code throughout the ship for the entire evening after 6:00pm: **INFORMAL**
Ladies: Cocktail party dress or pants suit
Gentlemen: Jacket and slacks; a tie is optional

Starlite Club

Tiffany Deck 6, Midship

Dance to the music by the **Crystal Sextet** and join the Ambassador Hosts.

5:15pm – 6:00pm and
7:45pm – 8:30pm

Crystal Cove

Crystal Deck 5, Midship

Brian Donnelly plays the Crystal piano
5:15pm – 6:15pm, 7:45pm – 8:45pm
& 10:30pm – 11:30pm

The Ginger String Quartet

Serenades with classical music
7:00pm – 7:45pm & 9:30pm – 10:30pm

Palm Court

Lido Deck 11, Forward

The Ginger String

Quartet plays for your listening pleasure.
5:15pm – 6:00pm and 7:45pm – 8:30pm

Dance the night away with the **Crystal Sextet**. Join the Ambassador Hosts.

9:30pm – 12:30am

Hollywood Theatre

Tiffany Deck 6, Forward

8:30pm & 10:30pm

Movie: Darling Companion. The story of a woman who loves her dog more than her husband. And then her husband loses the dog. PG-13; 1:43.

Avenue Saloon

Tiffany Deck 6, Aft

6:45pm – 8:30pm • **Mark Farris** plays your favorite requests in our cozy bar.

10:00pm – 1:00am • **Mark Farris** sings and entertains at the piano. Come sing-along, or just sit back and enjoy!

LUXE

Tiffany Deck 6, Midship

NFL Football

New York Jets vs. Pittsburgh Steelers
6:30pm

Late Night Dancing

10:00pm – Late
DJ Justice plays your requests!

10:15pm

Starlite Club

Tiffany Deck 6, Midship



Jim Brochu in

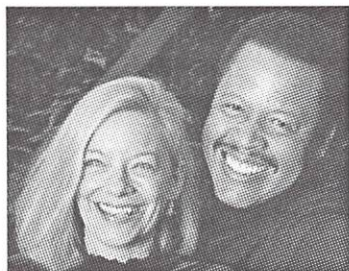
“Character man”

A Musical tribute to the great supporting players of the Broadway stage

7:00pm & 8:30pm • Galaxy Lounge, Tiffany Deck 6 Forward

IN TOWN TONIGHT

Crystal Cruises proudly presents...



Tony Award®-Nominated Broadway Vocalist and
Crystal Cruises' Two-Time Entertainer of the Year

Michel Bell

Accompanied by the **Galaxy Orchestra**
under the direction of **Catherine Matejka**

*Video/audio recording of this performance is strictly prohibited under international copyright law.
In order to maximize our guests' enjoyment of this evening's performance, beverage service is discontinued 10 minutes after the start of the performance.*

Paul's Late Night Smile: Deja Moo: The feeling that you've heard this bull before. For more late night smiles, go to PaulMcFarland.com



Sunday's Dining Hours

Breakfast

Lido Café, Lido Deck 11 Aft
Early-Bird Coffee (Port Side)
Early-Risers Buffet (Continental)
Breakfast Buffet

Crystal Dining Room, Crystal Deck 5 Midship
Breakfast (Open Seating)

The Bistro, Tiffany Deck 6 Midship
Late-Risers Coffee with Danish Pastries

Trident Grill, Lido Deck 11 Midship
Late-Risers Breakfast

Luncheon

Crystal Dining Room, Crystal Deck 5 Midship
Luncheon (Open Seating)

Lido Café, Lido Deck 11 Aft
Lunch Buffet

Trident Grill, Lido Deck 11 Midship
Open for hamburgers, cheeseburgers, wraps and snacks

Ice Cream Bar, Lido Deck 11 Midship

The Bistro, Tiffany Deck 6 Midship
Bistro Snacks, Tarts and Pastries

Palm Court, Deck 11
Crystal Afternoon Tea Time

Dinner

Crystal Dining Room, Crystal Deck 5 Midship

Dinner (Assigned Seating – Main Seating) 6:00pm
(Guests on Main Seating are kindly requested to be seated within the first 15 minutes)

Dinner (Assigned Seating – Late Seating) 8:30pm

Lido Café, Lido Deck 11 Aft

Casual Dinning (first-come, first-served basis) 7:00pm – 9:00pm

Prego, Tiffany Deck 6 Aft (Italian Cuisine) 6:00pm – 10:00pm

Silk Road, Tiffany Deck 6 Aft (Asian Cuisine by Nobu Matsuhisa) 6:00pm – 10:00pm

The Sushi Bar, Tiffany Deck 6 Aft (Cuisine by Nobu Matsuhisa) 6:00pm – 10:00pm

The Bistro, Tiffany Deck 6 Midship
Petit Desserts and Cheeses 8:00pm – 11:00pm

Late Night Gourmet Snacks

Avenue Saloon, LUXE and Starlite Club 11:30pm – 12:30am

Reservations for Silk Road and Prego: For your convenience, reservations can be made for these specialty restaurants by dialing 3854 or 0 anytime. If you'd prefer to make reservations in person, Maître d' **Paolo Alario** is available in Prego, Tiffany Deck 6 Aft, today from 5:00pm to 6:00pm. No reservations are required for **The Sushi Bar**; seating is based on a first-come, first-served basis.

Sunday's Bar Hours

Avenue Saloon	5:00pm – Late
The Bistro	9:00am – 11:00pm
Connoisseur Club	5:00pm – Late
Crystal Cove	10:00am – 11:30pm
LUXE	6:30pm – Late
Palm Court	11:00am – 10:00pm
Starlite Club	5:15pm – 12:30am
Trident Bar	10:00am – 6:00pm



Today's Cocktail Suggestion Chocolate Martini

Sobieski Vodka, Godiva and Chocolate Liqueur.

Available in all open bars and lounges.

Informal Night

5:00am – 6:30am
6:30am – 7:30am
7:30am – 10:00am

8:00am – 9:30am

9:00am – 11:30am

10:00am – 11:00am

12 Noon – 1:30pm

12 Noon – 1:30pm

11:30am – 6:00pm

11:30am – 6:00pm

11:30am – 8:00pm

3:30pm – 4:30pm

Avenue of the Stars Boutiques:

Tiffany Deck 6 Midship

Apropos, Crystal Collection and Facets

Shops are open from 9:00am until 9:00pm.

Crystal Casino, Tiffany Deck 6 Forward

Slots: Open from 10:00am to 2:00am

Table Games: Open from 1:00pm to 6:00pm and 8:00pm to 2:00am.

Guests must be 21 or older to participate in monetary-based games of chance.

Computer University@Sea, Tiffany Deck

Open 24 hours. Technology Concierges available from 7:00am to 11:00pm.

Keyboards available for the sight-impaired.

Concierge Desk, Crystal Deck 5 Midship

Open daily 7:30am to 7:30pm.

Cruise Sales Consultant, Crystal Deck 5

Nikki Andrew is at her desk from 8:30am to 11:30am and 3:00pm to 5:00pm.

Crystal Society Hostess, Crystal Deck 5

Jaque Brown is at her desk from 8:30am to 11:30am and 3:00pm to 5:00pm.

Crystal Spa & Salon, Sun Deck 12 Aft

Open 8:00am to 8:00pm including the men's and ladies' Sauna and Steam Room; phone 3875. Please note that appointments are available at your request until 10:00pm.

Crystal Spa Fitness Center, Aerobics

Studio & Weight Room, Sun Deck 12 Aft
Open 24 hours. Attendant is on duty 7:30am to 8:00pm. Our Fitness Directors are available for personal training sessions.

Library, Tiffany Deck 6 Midship

Open today 8:30am to 12 Noon, 1:30pm to 6:00pm and 7:30pm to 11:00pm. Check out books, DVDs and CDs for your enjoyment during the cruise.

Medical Center, Crystal Deck 5 Forward

Located just forward of Reception Desk on the starboard side. Open 8:00am to 12 Noon and 2:00pm to 6:00pm.

Doctor's Consultation Hours: 9:00am to 10:00am; 5:00pm to 6:00pm.

Medical attention (24 hours) dial 9911. In an extreme emergency call **3333**.

Photo Shop, Tiffany Deck 6.

Open today from 9:30am to 2:00pm and 5:30pm to 11:00pm.

Shore Excursions Desk, Crystal Deck 5

Open today from 9:00am to 1:00pm and 4:00pm to 7:00pm.