



Reflections

Crystal Symphony • Cruise 2221, No. 9

Thursday, September 13, 2012
At Sea, en Route to
Halifax, Canada
Sunrise: 6:13am • Sunset: 7:41pm

Great Ships of the World, Part 1 From Sails To Steam

A cheer ripples up the waterfront. Well-wishers crane to catch a glimpse of the ship's bow as she edges from the pier. Her teak decks are alive with passengers bound for destinations far and wide. Those standing fur-draped shoulder to fur-draped shoulder are on holiday.

Crowded below are others: wide-eyed babushka'd women and bearded men for whom this is a life-altering journey. A pilgrimage. Many may never see their homelands again. The cacophony of many tongues speaks their apprehension. Yet, their voyage is unalterably underway.

Early Steamships

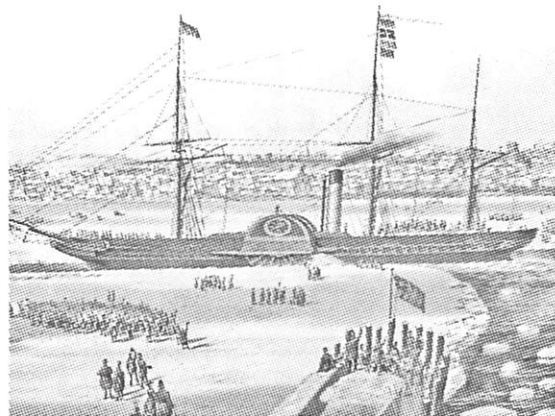
It all began in the early 1800s. Britain commanded what was considered to be the most powerful fleet of ships at that time: fighting ships, mainly, with the Union Jack flying atop the masts. Soon, people of many nations would be clambering aboard ships, leaving their

homelands behind. Why? To escape poverty or persecution, be it political or religious. To follow their dreams to the New World, across "the pond" and around the world to the fledgling colonies where fortunes were the promise, if not always the reality.

The barrier that stood in their path was the mighty Atlantic. Across Europe, shipbuilders had refined the steam engine and strengthened steel hulls. Paddle wheelers, they were, many of them. Places like Plymouth and Portsmouth, England, had focused on sailing ships but that all was about to change. Wooden hulls were scrapped. Sailing ships

were now used to bring coal to steamships and everyone cast an eye toward crossing greater distances by sea with greater ease.

Early historic voyages included the 1819 crossing of the Savannah from Georgia to England. A steam-driven engine powered the sailing vessel a fraction of the distance and this crossing is recorded as the Atlantic's first steamship crossing. American ship buffs salute May 22, her



1875 lithograph showing the Britannia in the ice of Boston harbor

Evening Dress Code: Formal

Ladies: Evening gown or party dress
Gentlemen: Tuxedo or dark business suit

Today's Notices

Crystal Visions Enrichment Series

We continue our intriguing lecture series today with presentations by Celebrity Lecturer **Major General Perry Smith**, Special Interest Lecturer **John Loesser** and Special Interest Lecture **Jay Christofferson**. Please see Daytime Activities insert for further details.

Formal Dress Code

Tonight's dress code throughout the ship for the entire evening after 6:00pm is **FORMAL**. In consideration of all guests, only those who adhere to the guidelines will be allowed into the public rooms. Thank you for your kind understanding and cooperation.

In Town Tonight

This evening at 8:30pm and 10:30pm in the Galaxy Lounge, Crystal Cruises proudly presents concert pianist **Tian Jiang** accompanied by the **Galaxy Orchestra** under the direction of **Harry Nijkamp**.

Karaoke!

Your chance to shine in the Karaoke spotlight. Join Crystal Society Hostess **Jaque Brown** and **DJ Justice** tonight from 10:00pm to Late in LUXE and be a singing sensation!

continued from front page ...

departure date, as National Maritime Day.

Within a decade, the Enterprise made the first steamship voyage between London and Cape Town then Calcutta, her eventual destination. And in 1831, following five months at sea, the Sophia Jane steamed into Sydney Harbour. She'd sailed 11,000 miles from England just 61 years after Captain James Cook made the same journey in those yet uncharted waters.

A Man Named Cunard

Delivering the mail around the globe was tedious, yet lucrative. And more money was to be made in this trade. The British were eager to contract for the services of a company that could reliably transport post and parcels around the world.

The government placed an advertisement in *The Times* soliciting proposals for mail service between Europe and America. Samuel Cunard learned of this quest through an acquaintance who told Cunard, "This is for you."

And the rest, as they say, is history.

Cunard's Britannia, with his daughter and himself aboard, reached Boston Harbor July 17, 1840 at what was dubbed Cunard Wharf. Crowds cheered, for this crossing was saluted as the greatest since the Mayflower. It signified an end to the isolation felt by many in America. Mail routes soon spread throughout the world.

P&O

In 1840, P&O Line made history when it was given the nod by the British government to transport the mail between England and Egypt, then eventually to South Africa, India, Asia and the news-starved folks in New Zealand and Australia. The Atlantic belonged to Cunard.

Everything that lay east of the Suez belonged initially to the realm of P&O.

And ship designers put pen to paper to build faster, more reliable vessels as quickly as one could say "I'd like to post a parcel to Pakistan."

An American Named Collins

The name of the American entrepreneur Edward K. Collins may not roll off the tongue like Cunard does but he is a man of note, nonetheless. Collins, with the support of American government, challenged Cunard's monopoly of the Atlantic mail route. His ploy was to attract the traveling public by offering luxury far beyond anything Cunard's ships provided.

Now, passengers had a choice of ships and levels of amenities, with commensurate price tags. It is to this gentleman we all owe a huge note of thanks. But success and sadness went hand in hand. Collins' wife and two children were lost at sea when one of his ships struck another vessel then sank near Newfoundland.

The Suez

The official opening of the Suez Canal, November 17, 1869, signaled a new chapter in sea travel. This effectively cut in half the steaming time between Europe and the rich lands of the Pacific. Traveling days were greatly reduced. By transiting the Suez, a journey from England to Bombay was now two weeks shorter.

Commerce flourished. Trade brought employment to many and immense wealth to some. Other nations established economic bases in these faraway lands. Intrepid adventurers journeyed by sea farther than their predecessors. The doors to a whole new world had been flung open by ship travel.

Part 2 in the next issue of *Reflections*.

– Karyn L. Planet

What guidelines do Crystal ships follow to ensure the ships' sanitation?



As our primary concern is for the safety and well being of our guests, Crystal Cruises follows the guidelines established by the Center for Disease Control and Prevention (CDC). In the early 1970s, the CDC established the Vessel Sanitation Program (VSP). Today the program annually incorporates two unannounced inspections in U.S. ports. Every vessel that has a foreign itinerary, carries 13 or more passengers and calls on a U.S. port is subject to the inspection.

To ensure a clean and healthful environment, cruise ships must meet the criteria established by the CDC. This inspection focuses on the ship's water supply, spas and pools, food storage, preparation and service, practices and personal hygiene of employees, cleanliness and physical condition of the ship, and the training programs in general environmental and public health practices. At the end of the inspection each ship is given a score based on a 100-point scale. A passing score is 86 or higher. Failure to obtain a satisfactory score indicates a ship has not attained generally accepted standards of sanitation; it does not necessarily imply an imminent risk of an outbreak.

By maintaining a stringent sanitation program and overall company dedication, for more than 10 years Crystal Cruises has maintained an average score of 95. Crystal Symphony has scored two perfect 100's. Crystal Serenity received a perfect score of 100 as well.

We continue to strive for excellence in all areas of public health and sanitation by establishing ongoing senior officer and crew training, providing shoreside support, and utilizing the CDC for guidance in new construction of our ships.



Personal Items Reminder

All Crystal Symphony guests are reminded not to leave personal items containing high value items, Passport/Driver's License and/or checks/credit cards, laptops, cameras, iPods or any other items of value, including, but not limited to jewelry, laptops, cameras, iPods, medicine with any individuals at hotels, on buses/vehicles or left unattended under any circumstances. It is unsafe to do so and Crystal Cruises cannot accept responsibility for any such valuables, passports, driver's license, checks, credit cards or medicine left in bags that are left unattended. This includes, but is not limited to, leaving items on tour or transfer coaches, with hotel bellmen or front office staff, at hospitality desks in hotels, or unattended hotel lobbies, holding locations, pier/terminals or any other locations. Personal items containing any valuables should be in the possession of the owners at

all times, without exception. Guests should not leave any such items with any individual who is not known to them, regardless of any assurances given to guests that it is safe to do so. Please note that Crystal Cruises cannot be responsible for any loss or theft resulting from guests leaving personal items containing valuables unattended.

Environmentally-Friendly Tote Bags

Upon arrival in your stateroom or penthouse, you may have noticed a new Crystal Cruises white cotton bag placed in your closet. We are pleased to present this tote bag for you to use throughout the cruise to take your personal items to the pool or spa, or for holding your towel and other belongings when going ashore or on a shore excursion. If you wish, you may even take the bag home with you, compliments of Crystal Cruises.

PERSONALITY PROFILE

Crystal Society Hostess Jaque Brown

Born and raised in Windsor, Ontario, Canada, **Jaque Brown** now resides in Plymouth, Michigan. She has worked in sales and management in the food and beverage and casino industries, bringing with her a variety of experience to her role as Crystal Society Hostess.



Just prior to signing on with Crystal, Jaque worked in the table games department for a large casino operator in Windsor. She was an effective team player on the management team for implementing programs for employees and management that included a guest relations training program, and a responsible alcohol service program. One of her most impressive accomplishments included working with Casino management to implement a new computer operating system.

Jaque's love for travel motivated her to pursue an opportunity to work with Crystal Cruises.

With her knowledge of Crystal Cruises combined with her experience in food and hotel operations, Jaque has a great deal to offer our Crystal Society members. Please see the back page of *Reflections* for Jaque's desk hours.

Captain Ralf Zander and the Crystal Family wish a...

Happy Birthday to:

Mrs. Joyce Bartfield
Ms. Bernice Birmingham
Mrs. Ardeth Dreshfield
Mr. Roy Kawano

Happy Anniversary to:

Mr. & Mrs. Walter & Janet Bergman (Sept. 3rd)
Mr. & Mrs. Dale & Robin Rands

Best Wishes!

Phone Home...

Avoid high roaming charges on your cell phone



New rates: \$2.50 USD per minute*

This new rate is in effect when you make ship-to-shore calls using your stateroom telephone that are billed to your shipboard account. The rate is in effect when calling any country in the world.

Refer to the Telephone Guide of your in-stateroom directory for complete instructions on using your telephone.

\$2.50 USD per minute*

*\$2.50 per minute rate applies to calls made using your in-stateroom phone and billed to your shipboard account.

PERSONALITY PROFILE

Rabbi

Morris M. Hershman

Rabbi Morris M. Hershman was born in Chicago and raised in Phoenix, Arizona. He earned a B. A. in Education from



Arizona State College at Tempe.

Rabbi Hershman attended Hebrew Union College – Jewish Institute of Religion in Cincinnati, where he earned the degrees Bachelor

of Hebrew Letters and Master of Arts in Hebrew Letters and was ordained Rabbi. He served a number of student pulpits and for two years he directed the seminary's student choir. While serving a congregation in Cedar Rapids he also pursued graduate studies at the School of Religion of the State University of Iowa.

Since 1961 Rabbi Hershman has been a resident of California. After many years of congregational experience he was named Director of the Northern California and Pacific Northwest Councils of the Union of American Hebrew Congregations, the national body of Reform Judaism in North America. He served in this position for 25 years until his retirement. Rabbi Hershman worked with more than 90 congregations throughout the western United States and Canada, many of which were organized and developed through his efforts. In addition to his UAHC responsibilities, Rabbi Hershman served for many years as a clinical faculty member of the Hebrew Union College in Los Angeles.

In 1983 Rabbi Hershman was awarded the degree of Doctor of Divinity, honoris causa, by Hebrew Union College.

Rabbi Hershman and his wife, Geraldine, live in Burlingame, California. They have three grown children, two of whom are married, and four exceptional grandchildren.

Calling All Crystal Society Shutterbugs

Would you like to see your photo in *Passport* magazine? We invite you to send us your photo carrying your green Crystal Society tote bag. Just take a photo with your tote bag anywhere in the world during your next Crystal cruise and e-mail the high resolution (300 dpi) .jpeg attachment to Crystal Society, crystalsociety2@crystalcruises.com. Tell us where and during which voyage you took the photograph, and you just might see your photo in an upcoming issue of *Passport* magazine.

CRYSTAL
CASINO

\$20 Slot Tournament

Today at 2:00pm

Registration from 10:00am until 1:45pm. Minimum 9 players; maximum 36 players.

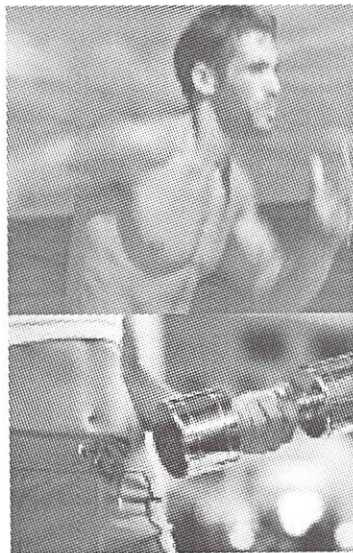
\$20 entry fee.

All entry fees returned as prize money.

Rounds to be played are determined by the number of entrants.

PRIZES: Cash and Crystal Casino Promotional items!

Today's Salon and Spa Offers



BODY COMPOSITION ANALYSIS

People work out for many different reasons, mainly to feel good and look great. Are you curious as to how you can get your body into the best possible shape, quickly?

To be sure you are on the right path, you must know just what shape your body is in. Our 'state of the art' body composition analysis machine gives you this precise information; by being able to measure your body fat content, lean muscle weight and the percentage of fluid in your body. Our Fitness Directors will be happy to show you how this modern machine works, and help you to better understand how to improve your body, and maintain a fitness routine.

ONLY \$40 Per Person

Crystal Spa & Salon

Shipboard credits may be used on all Spa & Salon Services.

For more information, please call 3875 or visit the Spa on Sun Deck 12 Aft



Daytime Activities

Good Morning

6:00am – 12 Noon	"The Morning Show" with your hosts Cruise Director Paul McFarland and Patricia Kent. TV Channel 27		
7:30am *	Morning Walk on Water & Nordic Walking with Fitness Director Neil. <i>(Participation limited; please register prior.)</i>	Promenade Deck Aft	7
8:00am *	Fitness Class: Yoga with Fitness Director Brian.	Starlite Club	6
8:30am *	Fitness Class: Circuit with Fitness Director Neil.	Fitness Center	12
8:30am	Catholic Mass is celebrated by Reverend Michael Lawlor	Hollywood Theatre	6
8:30am – 12 Noon, 1:30pm – 6:00pm & 7:30pm – 11:00pm	The Library Is Open. Check out books, DVDs & CDs for your enjoyment during the cruise. Sign up for indoor games like chess, scrabble, etc.	Library	6
9:00am	Captain's Update. The latest weather and navigation information.	PA System & Ch. 52	
9:05am *	Pilates with Instructor Jennifer Crane.	Palm Court	11
9:15am *	CU@sea Class: Beyond Basic Word Processing Using Office 2012 with Instructor Chip Adam. <i>(Space is limited; pre-registration required)</i>	The Studio	6
10:00am	Fitness Seminar. Burn Fat Faster with the Fitness Directors. Learn why burning fat is becoming increasingly difficult as time goes on, and it's not age. Our health and fitness experts teaches you how to increase your ability to burn fat and improve your quality of life.	Avenue Saloon	6
10:00am – 11:00am	Beginner's Bridge Lesson with Instructor Susan Carter. At this time, the Bridge Lounge is reserved for lessons only. Thank you.	Bridge Lounge	6
10:00am	Crystal Visions Enrichment Program. Celebrity Lecturer Major General Perry Smith presents "World War II: A 70 year Retrospective." <i>As a courtesy to your fellow guests, No Saving of Seats please. (This lecture is broadcast live on TV Channel 29; Rebroadcast on TV Channel 28: 12 Noon to 4:00pm.)</i>	Starlite Club	6
10:15am *	CU@Sea Class: Working with Scenery Photographs Using Photoshop Elements 9 with Instructor Chip Adam. <i>(Space is limited; pre-registration required)</i>	The Studio	6
10:30am *	TaylorMade Golf Clinic with PGA Golf Teaching Professional John Clark. "Video You Swing. Front View." For pre-registered guests.	Hollywood Theatre	6
11:00am	Acupuncture Seminar. Back Pain Relief. Join our Acupuncturist, Spencer Shimabukuro, for a presentation regarding back conditions and the application of oriental medicine.	LUXE	6
11:00am *	Paddle Tennis Open-Play with Fitness Director Brian. <i>(weather permitting)</i>	Wimbledon Court	12
11:00am	Rap with the Rabbi. An informal discussion with Rabbi Morris Hershman . All guests are welcome.	Palm Court, Strbd side	11
11:00am	BINGO hosted by the Crystal Casino. <i>Please note appropriate daytime dress code is appropriate attire for Bingo; no robes. (Game starts at 11:15am)</i>	Starlite Club	6
11:00am *	USC Digital Filmmaking Course iMovie for the iPad. "Learn the Basics of Editing with iMovie" with Instructors Kerry Millerick & Dina Sterr. (Pre-registration in CU@Sea & your own iPad with iMovie pre-loaded required. Participation is very limited.)	Avenue Saloon	6
11:00am – 12 Noon	Intermediate Bridge Lesson with Instructor Susan Carter. At this time, the Bridge Lounge is reserved for lessons only. Thank you.	Bridge Lounge	6
11:15am – 12 Noon *	Berlitz Spanish Language, AM Class with Instructor Maribel Morales.	The Studio	6
11:30am	Trunk Show with Roberto Coin.	Hollywood Theatre	6
11:30am	Service Clubs get together with Kaleigh from the Crystal Ensemble.	Palm Court, Port Side	11
11:30am – 12:30pm	Brian Donnelly plays the Crystal Piano for your midday cocktail pleasure.	Crystal Cove	5

* Indicates Creative Learning Institute Activity.

Good Afternoon

12 Noon	Team Trivia hosted by Sean of the Crystal Ensemble.	Starlite Club	6
12 Noon – 1:00pm	Free Gaming Lessons. Get all the tips from our experts.	Crystal Casino	6
1:30pm	Crystal Visions Enrichment Program. Destination Lecturer John Loesser presents "The Life and Music of Frank Loesser" and clips from the Award winning documentary <i>Heart & Soul, the life & Music of Frank Loesser.</i> <i>As a courtesy to your fellow guests, No Saving of Seats please.</i> (This lecture is broadcast live on TV Channel 29; Rebroadcast on TV Channel 28: 4:00pm to 8:00pm)	Starlite Club	6
2:00pm	\$20 Slot Tournament. Register from 10:00am until 1:45pm.	Crystal Casino	6
2:15pm *	CU@sea Class: iPad Tips and Tricks Lecture with Instructor Chip Adam. (Space is limited; pre-registration required)	The Studio	6
2:15pm – 3:00pm	Beginner's Needlepoint Get-Together with Activities Hostess Mari. Please bring your kit.	Palm Court, Strbd side	11
2:15pm – 4:15pm	Duplicate and Social Bridge with Instructor Susan Carter. At this time, the Bridge Lounge is reserved for bridge games only. Thank you.	Bridge Lounge	6
2:30pm	Movie: The Woman in Black A young lawyer travels to a remote village where he discovers the vengeful ghost of a scorned woman who is terrorizing the locals. Rated PG-13; 1:35	Hollywood Theatre	6
2:30pm	Complimentary Dance Class with Instructors Adam & Patricia and the Ambassador Hosts. Today's class: <i>Cha Cha Cha.</i> (Beginners welcome and no partner required).	Starlite Club	6
3:00pm *	Odyssey Art at Sea Masterpiece Program with Instructor Agnes Vaccarelli. "Wonders with watercolor. Create your masterpiece – Bring your artwork to life with watercolor techniques."	Lido Café, Port side	11
3:00pm	Table Tennis Open-Play with Fitness Director Neil.	Horizon Deck Aft	8
3:15pm *	TaylorMade Golf Clinic with PGA Golf Teaching Professional John Clark. "The Golf Grip, sometimes overlooked." (Inclement weather location: Deck 11 landing, outside Fantasia)	Golf Nets	12
3:15pm *	CU@sea Class: Files, Folders and The Finder Using iMac with Instructor Chip Adam. (Space is limited; pre-registration required)	The Studio	6
3:30pm-4:30pm	Afternoon Tea Time serenaded by the Ginger String Quartet.	Palm Court	11
3:30pm	Crystal Visions Enrichment Program. Special Interest Lecturer Jay Christofferson presents "Arctic Life. Learn how to identify the major groups of animals, and how these animals have adapted to this environment." <i>As a courtesy to your fellow guests, No Saving of Seats please.</i> (This lecture is broadcast live on TV Channel 29; Rebroadcast on TV Channel 28: 8:00pm to 12 Midnight)	Starlite Club	6
4:00pm *	Fitness Class: Abs with Fitness Director Brian.	Fitness Center	12
4:30pm *	Fitness Class: Stretch with Fitness Director Neil.	Fitness Center	12
4:45pm – 5:30pm *	Berlitz Spanish Language, PM Class with Instructor Maribel Morales.	The Studio	6
5:00pm	Friends of Bill W. meet in...	Lido Café Aft	11
5:00pm	Afternoon Walk on Water & Nordic Walking with Fitness Director Brian.	Promenade Deck Aft	7
5:00pm	5 O'Clock Funnies LIVE! Comedy clips hosted by Cruise Director Paul McFarland. Prize Trivia at approximately 5:30pm.	TV Channel 27	

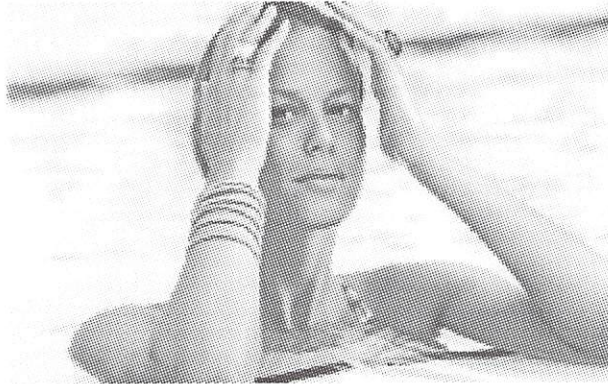
* Indicates Creative Learning Institute Activity.



SHOPPING ON BOARD

Today, in Hollywood Theatre at 11:30am
Roberto Coin Show

Come and join our Roberto Coin trunk show specialist, David Waggoner, to find out how the “Bollicine” is crafted.



He will take you into the world of Roberto Coin’s creations where jewels are born from the desire of experimenting with lights, shapes and colors by exploring new interpretations of the most precious element in the quest for unprecedented awesomeness.

FACETS

Shipboard credits may be applied to all retail purchases.

SHOPPING ON BOARD

RALPH LAUREN



What began forty years ago with a collection of ties has grown into an entire world, redefining American style. Ralph Lauren has always stood for providing quality products, creating worlds and inviting people to take part in our dream. We were the innovators of lifestyle advertisements that tell a story and the first to create stores that encourage customers to participate in that lifestyle.

“Back when all this started, I felt sure that there were no boundaries for Polo. I’m even more sure of that today.”

APROPOS



Shipboard credits may be applied to all retail purchases.

Travel the World Aboard Crystal Cruises



Our worldwide voyages offer an array of colorful places to explore. Choose from northern European destinations, historical Eastern and Western Mediterranean ports or tropical islands; cruise for as few as seven days, or as many as 108. See exotic places such as the South Pacific Islands, Asia, New Zealand, Australia, colorful South America or the more familiar ports of the Caribbean, Mexican Riviera, New England and Canada.

Starting your next cruise booking on board takes only minutes and secures your Onboard Booking Savings. Stop by the Cruise Sales Consultant’s Desk located in the Crystal Plaza, Deck 5 Midships, or simply complete a “Self-Booking” request form and return it to the Reception Desk. Please check the back page of *Reflections* for office hours. Once processed by our Los Angeles office, your booking request will be sent directly to your travel agent who receives full credit for your booking, and will follow up on all travel details upon your return home.

We look forward to welcoming you aboard again soon!

PERSONALITY PROFILE

Classical Pianist Tian Jiang

Since his acclaimed debut at Carnegie Hall in 1989, **Tian Jiang** has become recognized as one of the first virtuoso



pianists to emerge from the People's Republic of China after the stark years of the Cultural Revolution. Praised for his "formidable technique, shining, crisp, energetic and colorfully illumi-

nated playing by the *New York Times*, a subsequent profile on *CBS Sunday Morning* further celebrated the sweet irony of this remarkable young artist's rich, imaginative interpretations: that this music he had been forbidden to hear, let alone play as a child, had become his life.

At the age of 16 he met Vladimir Ashkenazy, then touring China for the first time. So impressed was the great Russian virtuoso that he invited Tian to appear in the BBC film *Ashkenazy in China*, documenting his visit. A subsequent meeting with the American violinist and goodwill ambassador Isaac Stern likewise resulted in friendship – and an agreement with the Chinese government to allow Tian to study at the San Francisco Conservatory for one year. Returning to China in 1982, he graduated from the Shanghai Conservatory with a bachelor's degree, won first prize in the National Piano Competition of China, and eventually achieved his goal of returning to the United States.

A first prize in the Joanna Hodges International Piano Competition enabled him to go to New York City where he would study at Manhattan School of Music; a Van Cliburn Scholarship Award took him to The Juilliard School where he would graduate with an artist's diploma.

First prizes in the William Kapell Compe-

tion and the Young Keyboard Artist's International Competition attracted so much critical attention that word of a remarkable talent – with a remarkable story – soon leaked to the media, prompting Tian's profile on *CBS Sunday Morning*. He has since been interviewed extensively on radio and television, including *CBS This Morning* with Paula Zahn, *Backstage* on PBS, *Entertainment News* on CNN, *Show Biz* on CNN, *All Things Considered* on NPR and with Robert Sherman and June LaBelle on WQXR radio in New York.

Now based in New York City, Tian has performed in such prestigious recital venues as Alice Tully Hall at Lincoln Center, the 92nd Street Y, Merkin Concert Hall, Weill Recital Hall and the Miller Theater in New York City, as well as in 30 cities in the United States, Europe

and Asia. A busy concert schedule has included guest appearances in cities throughout North and South America, Europe, the Far East, and Australia, with major ensembles. Chamber music appearances include concerts with flautist Andrea Giminelli, the Shanghai String Quartet and the Ying Quartet.

An accomplished composer, Tian often closes his concerts with innovative presentations of his own works, which he defines as classically informed while infused by his native culture. Selections from his critically acclaimed *Shanghai Dream* suite were featured in *First Person Singular*, a PBS documentary on the life of architect L. M Pei.

Tian has recorded several albums of his original compositions, including *Shanghai Dream*, *Dancing Waves*, *Peacock Dance* and *Folk Vision*.

Formal Portraits

A Rare Opportunity...



It isn't every day that we dress up so elegantly – that is part of what makes this evening so special.

Make the

memory of this spectacular evening last by having a formal portrait taken by the ship's photographers. Portraits are not only a wonderful way to remember your cruise, but they make superb gifts for loved ones at home.

Photographers are available outside the Crystal Dining Room, before and after the dinner seatings.

BINGO

12	18	41	47	61
26	39	54	70	
63	27	52	49	6
	35	58	7	

CRYSTAL CASINO

Join us for Bingo

Today in the Starlite Club:
11:00am Bingo cards on sale
(Bingo starts at 11:15am)
Hosted by Crystal Casino

©2007 Crystal Cruises, Inc., Ships' Registry: The Bahamas



Evening Entertainment Choices

Tonight's Dress Code throughout the ship for the entire evening: **FORMAL**

Ladies: Full-length evening gown or party dress

Gentlemen: Tuxedo or dark business suit

Starlite Club

Tiffany Deck 6, Midship

Dance the night away with the **Crystal Sextet**.

Join the Ambassador Hosts.

9:30pm – 12:30am

Palm Court

Lido Deck 11, Forward

Dance to the music by the **Crystal Sextet** and join the Ambassador Hosts.

5:15pm – 6:00pm

Hollywood Theatre

Tiffany Deck 6, Forward

8:30pm & 10:30pm

Movie: Café. When tragedy strikes the community surrounding a cafe in West Philadelphia, the cafe's regulars come to realize how intertwined their lives truly are. NR; 1:35

Avenue Saloon

Tiffany Deck 6, Aft

6:45pm – 8:30pm • **Mark Farris** plays your favorite requests in our cozy bar.

10:00pm – 1:00am • **Mark Farris** sings and entertains at the piano. Come sing-along, or just sit back and enjoy!

10:00pm • **Rat Pack Hour**

Crystal Cove

Crystal Deck 5, Midship

Brian Donnelly plays the Crystal piano 5:15pm – 6:15pm, 7:45pm – 8:45pm & 10:30pm – 11:30pm

The Ginger String Quartet

Serenades with classical music 7:00pm – 7:45pm & 9:30pm – 10:30pm

LUXE

Tiffany Deck 6, Midship

10:00pm – Late

KARAOKE 10:00pm – 1:00am with **Crystal Society Hostess Jaque Brown & DJ Justice**

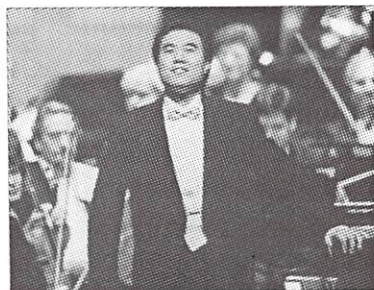
Late Night Dancing 1:00am – Late **DJ Justice** plays your requests!

8:30pm & 10:30pm

Galaxy Lounge, Tiffany Deck 6 Forward

.....
IN TOWN TONIGHT
.....

Crystal Cruises proudly presents...



Concert Pianist

Tian Jiang

Accompanied by the **Galaxy Orchestra** under the direction of **Harry Nijkamp**

Video/audio recording of this performance is strictly prohibited under international copyright law. In order to maximize our guests' enjoyment of this evening's performance, beverage service is discontinued 10 minutes after the start of the performance.

Paul's Late Night Smile: He who hesitates is not only lost, but miles past his exit.

For more late night smiles, go to PaulMcFarland.com



Thursday's Dining Hours

Breakfast

Lido Café, Lido Deck 11 Aft
Early-Bird Coffee (Port Side)
Early-Risers Buffet (Continental)
Breakfast Buffet

Crystal Dining Room, Crystal Deck 5 Midship
Breakfast (Open Seating)

The Bistro, Tiffany Deck 6 Midship
Late-Risers Coffee with Danish Pastries

Trident Grill, Lido Deck 11 Midship
Late-Risers Breakfast

Luncheon

Crystal Dining Room, Crystal Deck 5 Midship
Luncheon (Open Seating)

Lido Café, Lido Deck 11 Aft
Cuisine of the Sun Buffet

Trident Grill, Lido Deck 11 Midship
Open for hamburgers, cheeseburgers, wraps and snacks

Ice Cream Bar, Lido Deck 11 Midship

The Bistro, Tiffany Deck 6 Midship
Bistro Snacks, Tarts and Pastries

Palm Court, Lido Deck 11 Forward
Crystal Afternoon Tea Time

Dinner

Crystal Dining Room, Crystal Deck 5 Midship

Dinner (Assigned Seating – Main Seating) 6:00pm
(Guests on Main Seating are kindly requested to be seated within the first 15 minutes)

Dinner (Assigned Seating – Late Seating) 8:30pm

Prego, Tiffany Deck 6 Aft (Italian Cuisine) 6:00pm – 10:00pm

Silk Road, Tiffany Deck 6 Aft (Asian Cuisine by Nobu Matsuhisa) 6:00pm – 10:00pm

The Sushi Bar, Tiffany Deck 6 Aft (Cuisine by Nobu Matsuhisa) 6:00pm – 10:00pm

The Bistro, Tiffany Deck 6 Midship
Petit Desserts and Cheeses 8:00pm – 11:00pm

Late Night Gourmet Snacks

Avenue Saloon, LUXE and Starlite Club 11:30pm – 12:30am

Reservations for Silk Road and Prego: For your convenience, reservations can be made for these specialty restaurants by dialing 3854 or 0 anytime. If you'd prefer to make reservations in person, Maître d' **Paolo Alario** is available in Prego, Tiffany Deck 6 Aft, today from 5:00pm to 6:00pm. No reservations are required for **The Sushi Bar**; seating is based on a first-come, first-served basis.

Formal Night

5:00am – 6:30am
6:30am – 7:30am
7:30am – 10:00am

8:00am – 9:30am

9:00am – 11:30am

10:00am – 11:00am

12 Noon – 1:30pm

12 Noon – 1:30pm

11:30am – 6:00pm

11:30am – 6:00pm

11:30am – 8:00pm

3:30pm – 4:30pm

Avenue of the Stars Boutiques:

Tiffany Deck 6 Midship

Apropos, Crystal Collection and Facets
Shops are open from 9:00am until 9:00pm.

Crystal Casino, Tiffany Deck 6 Forward

Slots: Open from 10:00am to 2:00am

Table Games: Open from 1:00pm to 6:00pm and 8:00pm to 2:00am.

Guests must be 21 or older to participate in monetary-based games of chance.

Computer University@Sea, Tiffany Deck

Open 24 hours. Technology Concierges available from 7:00am to 11:00pm.

Keyboards available for the sight-impaired.

Concierge Desk, Crystal Deck 5 Midship

Open daily 7:30am to 7:30pm.

Cruise Sales Consultant, Crystal Deck 5

Nikki Andrew is at her desk from 8:30am to 11:30am and 3:30pm to 5:30pm.

Crystal Society Hostess, Crystal Deck 5

Jaque Brown is at her desk from 8:30am to 11:30am and 2:30pm to 4:30pm.

Crystal Spa & Salon, Sun Deck 12 Aft

Open 8:00am to 8:00pm including the men's and ladies' Sauna and Steam Room; phone 3875. Please note that appointments are available at your request until 10:00pm.

Crystal Spa Fitness Center, Aerobics

Studio & Weight Room, Sun Deck 12 Aft
Open 24 hours. Attendant is on duty 7:30am to 8:00pm. Our Fitness Directors are available for personal training sessions.

Library, Tiffany Deck 6 Midship

Open today 8:30am to 12 Noon, 1:30pm to 6:00pm and 7:30pm to 11:00pm. Check out books, DVDs and CDs for your enjoyment during the cruise.

Medical Center, Crystal Deck 5 Forward

Located just forward of Reception Desk on the starboard side. Open 8:00am to 12 Noon and 2:00pm to 6:00pm.

Doctor's Consultation Hours: 9:00am to 10:00am; 5:00pm to 6:00pm.

Medical attention (24 hours) dial 9911. In an extreme emergency call **3333**.

Photo Shop, Tiffany Deck 6.

Open today from 9:00am to 1:00pm.

Shore Excursions Desk, Crystal Deck 5

Open today from 9:00am to 7:00pm.

Thursday's Bar Hours

Avenue Saloon 5:00pm – Late
The Bistro 9:00am – 11:00pm
Connoisseur Club 5:00pm – Late
Crystal Cove 10:00am – 11:30pm
LUXE 10:00pm – Late
Palm Court 11:00am – 10:00pm
Starlite Club 5:30pm – 12:30am
Trident Bar 10:00am – 6:00pm



Today's Cocktail Suggestion

Kir Royal

Roederer Estate Sparkling Wine and Crème de Cassis.

Named after Félix Kir (1876–1968), mayor of Dijon in Burgundy.

Available in all open bars and lounges.

Comedy Entertainer Jimmy Travis

As one reviewer put it... "**Jimmy Travis** took the stage and within minutes made everyone in the audience feel like his new best friend.



His material was up beat and his approach to comedy was refreshing in a day and age when so many comedians lace their

shows with profanity."

Jimmy Travis has made over 50 national television appearances on such networks as Odyssey, The Family Channel, TNN, The Inspirational Network, and NBC as part of the Jerry Lewis Parade Of Stars.

He's a repeat performer in the main showrooms of Las Vegas, Reno and lake Tahoe, and is recognized as one of America's most popular convention acts with over 800 performances for various corporations, companies, and associations.

Jimmy Travis is a recent recipient of the Jimmy Durante award. This award is presented annually to a humorist or comedian and recognizes outstanding achievement in the field of family entertainment.

In addition to his comedic skills, Jimmy is also a gifted musician, singer, and songwriter. This combination makes him one of the most versatile performers in

the industry today.

Jimmy's song writing credits range from advertising jingles for fortune 500 companies, to theme songs for NASCAR races, to children's music. Jimmy and his wife Gail live in Nashville, Tn. where they own and operate a music publishing and production company.

Trying to describe a Jimmy Travis show is a lot like herding cats! It can be done... but it's not easy! Jimmy loves to adlib and interact with the audience, so no two shows are ever the same. But some things never change... Jimmy Travis is always current, always clean, and always entertaining!



Revised Evening Entertainment Choices

Dress Code throughout the ship for the entire evening after 6:00pm: **INFORMAL**
Ladies: Cocktail party dress or pants suit
Gentlemen: Jacket and slacks; a tie is optional

Starlite Club

Tiffany Deck 6, Midship

Dance to the music by the **Crystal Sextet** and join the Ambassador Hosts.

5:15pm – 6:00pm and 7:45pm – 8:30pm

Dance the night away with the **Crystal Sextet**.

Join the Ambassador Hosts.

9:30pm – 12:30am

Hollywood Theatre

Tiffany Deck 6, Forward

8:30pm & 10:30pm

Movie: Café. When tragedy strikes the community surrounding a cafe in West Philadelphia, the cafe's regulars come to realize how intertwined their lives truly are. NR; 1:35

Avenue Saloon

Tiffany Deck 6, Aft

6:45pm – 8:30pm • **Mark Farris** plays your favorite requests in our cozy bar.

10:00pm – 1:00am • **Mark Farris** sings and entertains at the piano. Come sing-along, or just sit back and enjoy!

10:00pm • **Rat Pack Hour**

Crystal Cove

Crystal Deck 5, Midship

Brian Donnelly plays the Crystal piano
5:15pm – 6:15pm, 7:45pm – 8:45pm

The Ginger String Quartet

Serenades with classical music
7:00pm – 7:45pm & 9:30pm – 10:15pm

10:15pm – 12 Midnight • **Cool Jazz** with the **Galaxy Combo**

LUXE

Tiffany Deck 6, Midship

10:00pm – Late

KARAOKE 10:00pm – 1:00am with **Crystal Society Hostess Jaque Brown & DJ Justice**

Late Night Dancing 1:00am – Late
DJ Justice plays your requests!

7:00pm & 8:30pm

Galaxy Lounge, Tiffany Deck 6 Forward

.....
IN TOWN TONIGHT
.....

Crystal Cruises proudly presents...



The Music and Comedy of Jimmy Travis

Accompanied by the **Galaxy Orchestra** under the direction of **Harry Nijkamp**

Vide/audio recording of this performance is strictly prohibited under international copyright law. In order to maximize our guests' enjoyment of this evening's performance, beverage service is discontinued 10 minutes after the start of the performance.

Paul's Late Night Smile: He who hesitates is not only lost, but miles past his exit.

For more late night smiles, go to PaulMcFarland.com