



Crystal Symphony • Cruise 2221, No. 8

Wednesday, September 12, 2012
Reykjavik, Iceland
Depart: 5:00pm
Sunrise: 6:40am • Sunset: 8:06pm
Forecast: Chance of Rain, 52°F / 11°C

Nordic Vikings — Masters of the Sea

Centuries ago, when weary peasants huddled in their cramped farmhouses warmed only by scraps of wood taken from deep in the forest, the masses of a terrorized Europe whispered at the end of each prayer, “and deliver us from the Vikings, Amen.”

Meanwhile, the leaders of more formal congregations chanted, “A furore Normannorum libera nos, Domine” – “From the fury of the Northmen deliver us, O Lord!” And, with good reason.

From the 8th century AD to the middle of the 11th century, people in much of the world felt the heavy hand of those men from the north called Vikings. For 250 years, generations of Norsemen eased their shield-rimmed warships into the icy waters of their own homelands and charted their courses for distant places like Russia, Iceland, Greenland, the Caspian Sea, the ex-

otic city of Istanbul, and what is now Canada. In their path, these sailors left a legacy of exploration, savagery and pillaging, yet oddly enough a reverence for some personal freedoms.

These mighty men decorated the prows of their ships with icons of serpents and dragons; their sails were striped with distinctive colors. As they swept through one village then another, they carried away whatever they could load aboard their ships. Items too cumbersome or judged unworthy were simply set ablaze. The destruction was sometimes catastrophic.

During their voyages, the Vikings also traded peacefully with local merchants. On one exploration, a strong wind blew Captain Bjarni Herjulfsson wildly off course, far beyond his original destination of Greenland to the shores of America.

Entering Valhalla

For a Viking, death in battle was the only noble death. Then and only then was the fallen warrior permitted to enter Valhalla, the revered Hall of

Evening Dress Code: **Casual**

Ladies: Blouse & pants, casual dress, pantsuit
Gentlemen: Long/short-sleeved shirt & slacks

Important Notices

Crew Fire and Lifeboat Drill

Today, the officers, staff and crew of Crystal Symphony practice safety procedures as they participate in a crew emergency muster at 10:00am. Guests are not involved in this drill, however, please note that guest services are slightly interrupted for the duration of the drill.

Complimentary Shuttle Service

A complimentary shuttle service is in operation throughout the day, operating from 9:00am to 4:00pm every 30 minutes, on the hour and half hour, in each direction. Last return back to the ship is 4:00pm.

Magic Castle at Sea

Crystal Cruises & the Magic Castle present Master Magician **Jonathan Levit** at 6:00pm, 7:00pm & 8:00pm in LUXE. Please collect your tickets in the Library. **Tickets are first come, first served and limited to 20 guests per show. Limited to two tickets per guest, please.**

Entertainment Tonight

At 8:30pm and 10:30pm in the Galaxy Lounge, Crystal Cruises proudly presents Broadway vocalist **Michel Bell** and pianist **Catherine Matejka** in the Galaxy Lounge.

Time Change Reminder

As Crystal Symphony sails into a new time zone tonight, we remind you to set your clocks and watches **BACK One Hour** before retiring this evening, Wednesday, September 12, 2012.



A traditional Viking ship on the high seas

continued on next page

continued...

the Slain. Viking burials were cause for wild celebration. If the deceased enjoyed great standing in the community, he would be placed in a long boat along with slaughtered animals, jewels, mead, food, cooking utensils and traditional weapons.

Even faithful slaves volunteered to be sacrificed to accompany their masters on their final voyage. For more than one week after the hero had died, the villagers would celebrate with drinking and the taking of many pleasures. At the time of cremation, a male relative, totally stripped of all clothing, would torch the boat and set it adrift. The blaze would quickly engulf it, ensuring that the deceased would have a speedy entry into Paradise.

When individuals of lesser nobility died, they would simply be put to sea in small boats. Commoners were buried ashore. A collar of rocks was placed around their modest graves to simulate boats. Archaeologists still study these markers, which are unearthed periodically.

Lands Near and Far

Early Vikings lived only on the shores of the Scandinavian countries. They sailed away on their voyages but always returned to their homelands. Then, for reasons that remain somewhat inexplicable, the population at home grew at such an alarming rate that the Vikings were forced to seek other places to establish communities. To provide for this ever-increasing population, the pillaging and looting of neighboring lands increased.

By the 9th century, the Norwegians and Danes had concentrated their raids on the British Isles and the European landmass. The Swedes, meanwhile, focused on the fertile lands of Russia. As their ships sliced their way along the rivers Volga and Dnieper, they picked up not only foodstuffs, but also riches such

as amber and fur. Upon reaching the faraway cities of Byzantium and Baghdad, the Vikings traded these treasures for shimmering silks and ornate silver from the Orient.

Today, the descendants of these fair-haired Viking warriors populate many distant shores, from Sicily to Turkey, from northern Africa to Iceland, even to the banks of Paris where Viking sailors came by the boatload. Not surprisingly, many spent their winters in the warmer climates rather than return to the biting cold of Scandinavia.

The Moors' Revenge

Eventually, the Vikings suffered serious naval defeats by the Moors, who avenged the loss of their cities. As the pages turned on the year 900, the Vikings found the French towns depleted of their provisions and fields abandoned by frightened peasants. The Vikings became frustrated and vented even greater wrath on England. The proud city of London was among those that fell. Ultimately the Viking marauders were driven out of the British Isles.

Other failures abroad contributed to the demise of the Vikings' power in much of the world. Greenland was abandoned. Viking communities survived in Iceland alone and, today, the people of Iceland speak a language only they and the ancient Vikings could understand.

Viking customs began to erode, as well. Christianity found its way to Scandinavia. Wars further divided the lands the Viking had conquered. And professional armies triumphed in battle over the Vikings. Alas, the Viking Age drew to a close.

This dramatic turn of events saddened some, yet was cause for celebration for others. Nonetheless, their seafaring legacy lives on and the love of the sea still stirs the souls of today's Norsemen.

– Karyn L. Planet

DIGITAL FILES PROMOTION

AVAILABLE NOW AT THE PHOTO SHOP

Enroll in the Flash Memories Program for only \$50*

*Then for every print purchased
we'll provide the digital file at
no extra cost.*



*On the last evening of the
cruise you will receive a 1GB
USB flash drive, with the digital
files of all the prints you have
purchased during your cruise.**

All digital files will be in JPEG
format.

You have the 'right to reproduce' images contained on your flash drive, from your Crystal Cruises voyage.

Should you have any questions
please contact the Photo Shop.
Ext 3869

*Valid for one voyage. Excludes stock images, private commissions, and large group images.



PERSONALITY PROFILES

Broadway Vocalist Michel Bell and Pianist Catherine Matejka

Michel Bell, a native of Fresno, California, has distinguished himself in the fields of opera, pop and Broadway music. After



attending Chapman University, Michel sang with several music groups, including the Doodletown Pipers, the New Establishment and the Fifth Dimension.

In the classical field, he has performed as soloist with the San Diego Symphony, Los Angeles Philharmonic, Indianapolis Symphony, Berlin Radio Orchestra and Fresno Philharmonic, and most recently the New York Philharmonic with Marvin Hamlisch conducting. He has also appeared with the San Diego Opera, Kansas City Opera, Michigan Opera, Opera Pacific and the Houston Grand Opera.

Mr. Bell is especially known for his portrayal of Porgy in Gershwin's Porgy and Bess, which he performed in the United States, Norway, and Eritrea. He has also performed the role in Germany, France, Japan, Egypt, and in the ruins of Pompeii.

On the Broadway stage, Mr. Bell received a Tony Award® nomination for his portrayal of Joe in Hal Prince's production of *Show Boat*. He has also received the Jefferson Award (Chicago) and the Ovation Award (Los Angeles). In 1998, Michel made his West End debut in London in *Show Boat* at the Prince Edward Theatre. Again on Broadway, he starred in the Frank Wildhorn musical *Civil War* at the St. James Theatre, for which he earned an Outer Critic's Circle Award for his performance as the slave

Clayton Toler. Most recently, he appeared as vocal soloist in *Riverdance: The Musical* on Broadway at the Gershwin Theatre as well as in the Far East, Europe and North American tours of that show. He also performed in *Show Boat* at the MUNY Theatre in St. Louis.

Michel has performed at the Kennedy Center Honors and was a featured performer in the "America's Millennium" celebration in Washington D.C.



Catherine Matejka has performed internationally as a piano soloist, accompanist, chamber musician and conductor. She was music director and conductor for

the national tour of the Harold Prince production of *Show Boat*. She was also

conductor for the Toronto, Los Angeles, Chicago and Broadway companies of *Show Boat*.

Catherine graduated *summa cum laude* with a Bachelor of Music degree in piano from Baldwin-Wallace College in Berea, Ohio. She received her Master of Music degree with Honors from the New England Conservatory in Boston. She was awarded a Tanglewood Fellowship to the Berkshire Music Festival as well as receiving an alumni achievement award from Baldwin-Wallace.

Ms. Matejka has been on the music faculty at Clark University, University of Massachusetts, Franklin Pierce College and Los Angeles Harbor College. Catherine made her Carnegie Hall debut in a concert of new American music.

Michel's CDs are available in our onboard gift shop, Apropos.

Spa Port Day Specials

The combination of our anti-aging **La Thérapie Facial** and **Miracle Micro Therapy**, a gentle form of Microdermabrasion, reduces the appearance of aging and treats other skin conditions such as fine lines, skin discoloration, enlarged pores, sun and age spots, as well as scars and other blemishes. **Today only \$149**, normally \$175

Smile with Confidence! GO-SMILE Fast, Safe, Pain-free & Sensitivity-free. In one 30-minute session, your teeth are anywhere from 4-6 shades whiter! Clean off your wine, coffee, tea & tobacco stains. Singles treatment: **Today only \$149**, including one month homecare, normally \$198

Salon Beauty Treats

Choose any of the following treats:

3 for \$99, 4 for \$109 or all treats for \$119 – European Mini Facial, Pro-collagen Eye Treatment, Conditioning Hair treatment, Scalp, Neck & Shoulder Massage, Moisturizing Hand Spa, and Foot & Ankle Massage.

*10% Discount on any Face & Body Signature Treatments today.
All Offers valid for services booked and provided today only.*



Crystal Spa & Salon

Shipboard credits may be used on all Spa and Salon Services.
For more information, please call 3875 or visit the Spa on Sun Deck 12 Aft

Reykjavik, Iceland, Information

Crystal Symphony is docked at Skarfabakki Pier in Reykjavik, Iceland, today, Wednesday, September 12, and will sail for Halifax, Canada, at 5:00pm.

When going ashore, please remember to carry your **Guest Identification Key Card**, as you must show it to the officer at the gangway when re-boarding the ship.

Metered taxis are available at the pier and the cost to the center of Reykjavik is approximately US\$20.

Crystal Cruises is pleased to provide a **complimentary shuttle service** from the Pier to Arnarholl located on Larkjargata near the Arnarson Statue in the city center. The first shuttle departs the pier at **9:00am** and will run on a continuous basis every 30 minutes on the hour and the half hour in each direction. The last return from the city at **4:00pm**.

The unit of currency in Iceland is the Icelandic Krona (ISK). The current exchange rate is US\$1.00 = approximately 122 ISK. Traveler's checks and credit cards are widely accepted. U.S. dollars, in general, are not accepted.

The Visitor Center is located right at the harbor where we dock and is open from arrival until departure of our ship. Services in the visitor center include shopping (souvenirs, postcards and designer items for sale); money exchange (get local currency when you arrive and exchange upon departure); and tax free refund. **Make sure you get your tax back after shopping in Iceland. Ask for a tax-refund-voucher upon your purchase of goods and claim your tax refund in the Visitor Center.**

Crystal Symphony sails for Halifax, Canada at 5:00pm. Please be back on board by 4:30pm.

SHOPPING ON BOARD

Chopard

The Chopard Company has developed a variety of watch collections, including quartz and mechanical timepieces, gem-set and technically complicated models, classic and sporty ones. The list of the leading Chopard collections is the following: Mille Miglia, L.U.C., Happy Diamonds, Happy Sport, Happy Spirit, Classiques, and Haute Horlogerie.

Chopard's Mille Miglia watch collection comprises mechanical timepieces of sporty style.

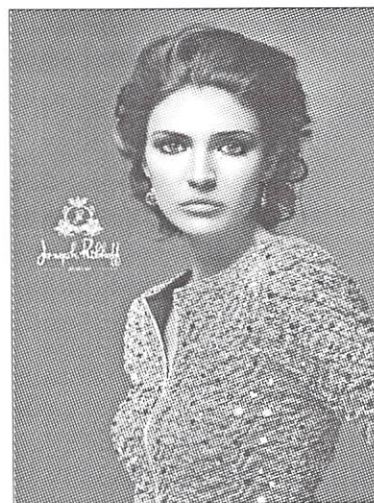
These timepieces appeared as a result of the brand's partnership with Italian car rally, the Mille Miglia. The Chopard Happy Sport ladies' collection features timepieces that unite sporty style with precious stones and bright colors. The L.U.C collection features massive sporty-styled chronometers and elegant classy men's watches.



FACETS Fine Jewelry Boutique

Shipboard credits may be applied to all retail purchases.

SHOPPING ON BOARD



Joseph Ribkoff

Joseph Ribkoff is an award-winning Canadian designer line that has reached international status. And it's no surprise, with the original and versatile designs, reaching markets across the world. Joseph Ribkoff is truly a product with global appeal. Featuring affordable ladies' apparel for all occasions, Joseph Ribkoff is an elegant and feminine clothing line, a beautiful addition to any woman's wardrobe!

APROPOS

Shipboard credits may be applied to all retail purchases.

Daytime Activities

Good Morning

Crystal Symphony is docked at Reykjavik, Iceland.

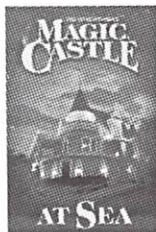
The Local Port Representative for Reykjavik is Eimskip, Ltd (Reykjavik).

In the event of an emergency while ashore, please contact them at Tel 9.011.354.560.0700.

6:00am – 12 Noon	"The Morning Show" with Cruise Director Paul McFarland & special guest Patricia Kent.	TV Channel 27	
7:30am★	Morning Walk on Water & Nordic Walking Program with Fitness Director Brian.	Promenade Deck Aft	7
8:00am★	Fitness Class: <i>Stretch</i> with Fitness Director Brian.	Fitness Center	12
8:30am★	Fitness Class: <i>Abs</i> with Fitness Director Brian.	Fitness Center	12
9:00am – 12 Noon, 3:00pm – 6:00pm & 7:30pm – 11:00pm	The Library Is Open. Check out books, DVDs & CDs for your enjoyment during the cruise. Sign up for indoor games like chess, scrabble, etc.	Library	6
10:00am	Crew Emergency Muster. Guests are not involved in this drill, however, please note that guest services are interrupted for the duration of the drill.	Ship Wide	
11:00am	Paddle Tennis Open-Play with Fitness Director Brian. (<i>weather permitting</i>)	Wimbledon Court	12

Good Afternoon

2:15pm	Bridge Players meet for unhosted play.	Bridge Lounge	6
2:30pm	Movie: <i>Men in Black 3.</i> Agent J travels in time to MIB's early years in the 1960s, to stop an alien from assassinating his friend Agent K and changing history. Rated: PG-13, 1:47	Hollywood Theatre	6
3:00pm	Table Tennis Open-Play with Fitness Director Brian.	Horizon Deck Aft	8
3:30pm – 4:30pm	Crystal Afternoon Tea Time serenaded by the Ginger String Quartet.	Palm Court	11
4:00pm★	Fitness Class: <i>Circuit</i> with Fitness Director Brian.	Fitness Center	12
4:30pm★	Fitness Class: <i>Stretch</i> with Fitness Director Brian.	Fitness Center	12
4:30pm	All guests on board, please.		
5:00pm	Crystal Symphony sails for Halifax, Canada.		
5:00pm	5 O'Clock Funnies LIVE! Comedy clips hosted by Cruise Director Paul McFarland.	TV Channel 27	
5:00pm	Friends of Bill W. meet in...	Lido Café Aft	11
5:00pm★	Afternoon Walk on Water & Nordic Walking Program with Fitness Director Brian.	Promenade Deck Aft	7
5:30pm	Catholic Mass is celebrated by Reverend Michael Lawlor.	Hollywood Theatre	6



6:00pm, 7:00pm & 8:00pm • LUXE Tiffany Deck 6, Midship

Magic Castle at Sea

Featuring Master Magician **Jonathan Levit**

This exclusive performance is limited to only 20 guests per show.

Please collect your ticket from the Library. Tickets are first come, first served.

Limited to two tickets per guest, please.

★ Indicates Creative Learning Institute Activity



Evening Entertainment Choices

Tonight's Dress Code throughout the ship for the entire evening after 6:00pm: **CASUAL**
Blouse and pants, casual dress, or pantsuit for the ladies.
Polo shirts or open collar long/short sleeved shirts with slacks for the gentlemen.

Crystal Cove

Crystal Deck 5, Midship

Brian Donnelly plays the Crystal piano
5:15pm – 6:15pm, 7:45pm – 8:45pm
& 10:30pm – 11:30pm

The Ginger String Quartet

Serenades with classical music
7:00pm – 7:45pm & 9:30pm – 10:30pm

Palm Court

Lido Deck 11, Forward

**Dance to the music by the
Crystal Sextet.**

5:15pm – 6:00pm
7:45pm – 8:30pm

Hollywood Theatre

Tiffany Deck 6, Forward

8:30pm & 10:30pm

Movie: *The Woman in Black*

A young lawyer travels to a remote village where he discovers the vengeful ghost of a scorned woman who is terrorizing the locals.
Rated PG-13; 1:35

Avenue Saloon

Tiffany Deck 6, Aft

6:45pm – 8:30pm • **Mark Farris** plays your favorite requests in our cozy bar.

10:00pm – 1:00am • **Mark Farris** sings and entertains at the piano. Come sing-along, or just sit back and enjoy!

Starlite Club

Tiffany Deck 6, Midship

Dance the night away with the **Crystal Sextet.**

Join the Ambassador Hosts.
9:30pm – 12:30am

LUXE

Tiffany Deck 6, Midship

Late Night Dancing

10:00pm – 12 Midnight

12 Midnight – Late

Today's Music with DJ Justice

8:30pm & 10:30pm

Galaxy Lounge, Tiffany Deck 6 Forward

•••••
IN TOWN TONIGHT
•••••

Crystal Cruises proudly presents...



**Tony Award®-Nominated Broadway Vocalist and
Crystal Cruises' Two-Time Entertainer of the Year**

Michel Bell

Accompanied by the **Galaxy Orchestra**
under the direction of **Catherine Matejka**

*Vide/audio recording of this performance is strictly prohibited under international copyright law.
In order to maximize our guests' enjoyment of this evening's performance, beverage service is discontinued 10 minutes after the start of the performance.*

Paul's Late Night Smile: She got her good looks from her father – he was a plastic surgeon.
More late night @ PaulMcFarland.com



PERSONALITY PROFILE

Headline Magician Jonathan Levit

Jonathan Levit has served as a magician, creator/producer of projects for television and film, a television host, and an actor.



He has appeared as an actor, in numerous films and as a guest star in various television series including his recurring role as Martin Dewey, the LA County Coroner on ABC's *Flash*

Forward. As a magician, Jonathan has appeared on Fox's *Masters Of Illusion*, as the host and judge on VH1's magic reality series – *Celebracadabra* and is a regular performer at the World Famous Magic Castle in Hollywood, CA.

He has hosted many other shows including Discovery Channel's *Miracle Hunters* and *Wired Nextfest*, Biography Channel's *Paranormal U.S.A.* and Fine Living Network's *Green With Envy*. Currently, Jonathan hosts Equator HD's *Green Wheels*, now airing on the Halogen channel.

Recently, Levit served as magic consultant on the Warner Brothers film *Burt Wonderstone* starring Steve Carell, Alan Arkin, Jim Carrey and Olivia Wilde.

No Solicitation Policy

Crystal Cruises is committed to providing you the best luxury travel experience possible. Under no circumstances is any travel agency permitted to solicit your business on board for future cruise travel.

If anyone approaches you for the purpose of soliciting your future cruise travel business, please report the matter to the Hotel Director who will take the appropriate action.

If you are interested in booking a future cruise, please feel confident to visit our Crystal Cruise Sales Consultant on Crystal Deck 5 for assistance and your next cruise booking will then receive additional onboard bookings savings and automatically be forwarded back to your own travel agent for handling and credit.

Captain Ralf Zander and the Crystal Family wish a...

Happy Birthday to:

Mr. Warren Perlman
Ms. Barbara Pomeroy
Mrs. Jamie Quinlan

Best Wishes!

Crystal Adventures Shore Excursions Departure Times



All tours meet today according to the times listed below. For the comfort of all our guests, Crystal Cruises endorses a "no-tour announcement policy."

Morning Departures

REY-I1: Iceland Historic Exploration
Departs from Starlite Club at 7:45am

REY-L: From the Ashes: Life in the Company of a Volcano
Departs from Starlite Club at 7:45am

REY-M: Icelandic Wonders & Horse Show
Departs from Starlite Club at 7:45am

REY-N: Glacier Adventure by 4X4 & Snowmobile
Departs from Starlite Club at 7:45am

REY-A1: The Blue Lagon & Leisurely Reykjavik
Departs from Starlite Club at 7:45am

REY-D1: Relaxing in the Blue Lagoon
Departs from Starlite Club at 8:15am

REY-C1: Iceland Landscape by Horseback
Departs from Starlite Club at 9:00am

REY-B1: Fire & Ice: Volcano & Glacier Flightseeing Adventure
Departs from Starlite Club at 9:45pm

REY-J: 4x4 Adventure & Lobster Lunch
Departs from Starlite Club at 9:45am

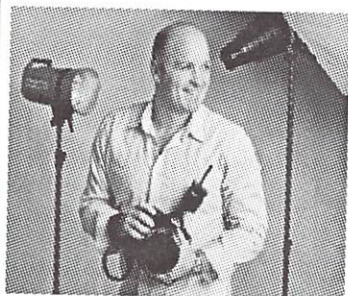
Afternoon Departures

REY-E: Sea Angling Adventure
Departs from Starlite Club at 12:15pm

REY-H: Whale Watching Experience
Departs from Starlite Club at 12:15pm

Master photographer David MacDonald

David MacDonald is a Fellow of both the British Institute of Professional Photography (BIPP) and the Master Photographers Association (MPA).



He has received numerous honors including, the Kodak United Kingdom Portrait Photographer of the Year, the MPA UK Family Portrait Photographer of the Year and the MPA UK (under 5 year olds Portrait Photographer of the Year. In addition, he serves as a judge for professional qualification reviews for both British photographic associations and lectures to photographers around the world.



Wednesday's Dining Hours

Breakfast

Lido Café, Lido Deck 11 Aft
Early-Bird Coffee (Port Side)
Early-Risers Buffet (Continental)
Breakfast Buffet

Crystal Dining Room, Crystal Deck 5 Midship
Breakfast (Open Seating)

The Bistro, Tiffany Deck 6 Midship
Late-Risers Coffee with Danish Pastries

Trident Grill, Lido Deck 11 Midship
Late-Risers Breakfast

Luncheon

Crystal Dining Room, Crystal Deck 5 Midship
Luncheon (Open Seating)

Lido Café, Lido Deck 11 Aft
Luncheon Buffet

Trident Grill, Lido Deck 11 Midship
Open for hamburgers, cheeseburgers, wraps and snacks

Ice Cream Bar, Lido Deck 11 Midship

The Bistro, Tiffany Deck 6 Midship
Bistro Snacks, Tarts and Pastries

Palm Court, Lido Deck 11 Forward
Crystal Afternoon Tea Time

Dinner

Crystal Dining Room, Crystal Deck 5 Midship

Neptune Dinner (Assigned Seating – Main Seating) 6:00pm
(Guests on Main Seating are kindly requested to be seated within the first 15 minutes)

Neptune Dinner (Assigned Seating – Late Seating) 8:30pm

Prego, Tiffany Deck 6 Aft (Italian Cuisine) 6:00pm – 10:00pm

Silk Road, Tiffany Deck 6 Aft (Asian Cuisine by Nobu Matsuhisa) 6:00pm – 10:00pm

The Sushi Bar, Tiffany Deck 6 Aft (Cuisine by Nobu Matsuhisa) 6:00pm – 10:00pm

The Bistro, Tiffany Deck 6 Midship
Petit Desserts and Cheeses 8:00pm – 11:00pm

Late Night Gourmet Snacks

Avenue Saloon, LUXE and Starlite Club 11:30pm – 12:30am

Reservations for Silk Road and Prego: For your convenience, reservations can be made for these specialty restaurants by dialing 3854 or 0 anytime. If you'd prefer to make reservations in person, Maître d' **Paolo Alario** is available in Prego, Tiffany Deck 6 Aft, today from 5:00pm to 6:00pm. No reservations are required for **The Sushi Bar**; seating is based on a first-come, first-served basis.

Wednesday's Bar Hours

Avenue Saloon 5:00pm – Late
The Bistro 9:00am – 11:00pm
Connoisseur Club 5:00pm – Late
Crystal Cove 10:00am – 11:30pm
LUXE 10:00pm – Late
Palm Court 3:30pm – 10:00pm
Starlite Club 5:30pm – 12:30am
Trident Bar 10:00am – 6:00pm



Today's Cocktail Suggestion

Jade Martini

Sobeiski Vanilla, Midori, Lime Juice, Fresh Lemon Sour and Dash Pineapple Juice.

Available in all open bars and lounges.

Casual Night

5:00am – 6:00am
6:00am – 6:45am
6:45am – 10:00am

7:00am – 9:30am

9:00am – 11:30am

10:00am – 11:00am

12 Noon – 1:30pm

11:30am – 1:30pm

11:30am – 6:00pm

11:30am – 6:00pm

11:30am – 8:00pm

3:30pm – 4:30pm

Avenue of the Stars Boutiques:

Tiffany Deck 6 Midship

Apropos, Crystal Collection and Facets

Open from sailing to 11:00pm.

Crystal Casino, Tiffany Deck 6 Forward

Slots: 6:00pm to 2:00am

Table Games: 8:00pm to 2:00am

Guests must be 21 or older to participate in monetary-based games of chance.

Computer University@Sea, Tiffany Deck

Open 24 hours. Technology Concierges

available from 7:00am to 11:00pm.

Keyboards available for the sight-impaired.

Concierge Desk, Crystal Deck 5 Midship

Open daily 7:30am to 7:30pm.

Cruise Sales Consultant, Crystal Deck 5

Nikki Andrew is at her desk from 3:30pm to

6:00pm.

Crystal Society Hostess, Crystal Deck 5

Jaque Brown is at her desk from 9:00am to

12 Noon.

Crystal Spa & Salon, Sun Deck 12 Aft

Open 8:00am to 8:00pm including the men's and ladies' Sauna and Steam Room; phone 3875. Please note that appointments are available at your request until 10:00pm.

Crystal Spa Fitness Center, Aerobics

Studio & Weight Room, Sun Deck 12 Aft

Open 24 hours. Attendant is on duty 7:30am to 8:00pm. Our Fitness Directors are available for personal training sessions.

Library, Tiffany Deck 6 Midship

Open today 9:00am to 12 Noon, 3:00pm

to 6:00pm and 7:30pm to 11:00pm.

Check out books, DVDs and CDs for

your enjoyment during the cruise.

Medical Center, Crystal Deck 5 Forward

Located just forward of Reception Desk on

the starboard side. Open 8:00am to

12 Noon and 2:00pm to 6:00pm.

Doctor's Consultation Hours: 9:00am to

10:00am; 5:00pm to 6:00pm.

Medical attention (24 hours) dial 9911.

In an extreme emergency call **3333**.

Photo Shop, Tiffany Deck 6.

5:30pm to 10:00pm.

Shore Excursions Desk, Crystal Deck 5

Open today from 7:00am to 7:45am,

11:00am to 1:00pm and 5:00pm to 7:00pm.

