



Crystal Symphony • Cruise 2221, No. 7

Tuesday, September 11, 2012
Reykjavik, Iceland
Arrive: 9:00am
Sunrise: 6:43am • Sunset: 8:03pm
Forecast: Clear, 48°F / 8°C

Reykjavik, Iceland — The Summit City

James Morris put pen to paper in the year 1972; of Iceland he wrote, “There is something allegorical about the very fact of Iceland, something that puts most visitors in mind of still remoter grandeurs – Dantean visions of heaven or hell, or classical conceptions of Elysium, improbably transplanted to these icy realms with asphodels among the glaciers. This is an island of absolutes, where nothing is blurred, and sometimes it feels less like a country than a prophecy, a mystery play or a topsy-turvy sort of Utopia.”

Perhaps your impressions of Iceland will be a bit less lyrical, but undoubtedly will be equally emblazoned in your travel memories for years to come. There is a rather mind-boggling series of contrasts here that one must ponder. First, Reykjavik is remote, somewhat unknown. Despite this fact, it was selected as the site for one of the 20th-century’s most visible

summits – the 1986 meeting between President Reagan and General Secretary Gorbachev. Organizers were given only ten days notice of the event, by the way.

Also, the skyline is so free from pollution that you can see for 75 miles on a clear day. Yet “Reykjavik” (*ray-kyavik*) translates to “Bay of Smoke,” which describes the geothermal steam vents that provide running hot water and central heating for the whole city and make outdoor swimming a comfort year-round. Consider too, the population relies mainly on the physically-demanding fishing industry for its economy (producing one-third the world’s supply of cod liver oil), yet proudly boasts the highest literacy rate in the world. And finally, despite its northern latitude, the winter weather is often milder in Reykjavik than it is in New York City.

A Look at the City

Reykjavik is a relatively small city and quite easy to maneuver around. With a good map and comfortable

Evening Dress Code: Casual

Ladies: Blouse & pants, casual dress, pantsuit
Gentlemen: Long/short-sleeved shirt & slacks

Important Notices

Welcome to Reykjavik

Crystal Symphony is scheduled to dock at Skarfabakki Pier in Reykjavik, Iceland, at 9:00am today, Tuesday, September 11, 2012. Please see *Arrival Information* inside for further details.

Enrichment Program – Reserving Seats

In consideration and fairness to all guests participating in Crystal Visions Enrichment Series, please be advised that seats cannot be reserved by any one person in the Starlite Club.

Casual Dining

The Lido Café extends its hours and offers a special limited menu. No reservations are required for the Lido Café’s Casual Dining and there is no extra charge for this fine dining experience. Experience Casual Dining tonight from 7:00pm to 9:00pm at the Lido Café, Lido Deck 11, aft.

Production Showtime

The Crystal Ensemble of Singers and Dancers present **Route 66** at 6:45pm and 8:30pm in the Galaxy Lounge.



Setting course from Chicago with its jazz and blues, our route heads to St. Louis for soulful R&B

sounds, follows a Southern route into Texas, home of the country rock scene, and races toward Los Angeles for the pop and surf tunes of California’s coast.



The Hallgrímskirkja, a Lutheran church, 244 ft. tall, built between 1945 – 1986.

continued on next page

continued...

walking shoes you can easily “do the town.” Begin your sight-seeing in the area between the harbor and the lake. Here you will find Laekjartorg Square with its impressive statue towers. If you continue toward the lake you’ll come to the Alþingishus, the House of Parliament. Nearby is the Domkirkjan, or Cathedral. All around the lake you’ll see the citizens of Reykjavik enjoying the warm sun... it sets only three hours a day during summer’s “Light Period.” Pause for a friendly chat before heading off to one of the museums nearby. On one side of the lake is the National Museum of Iceland. On the other, you’ll find the Asgrimur Jonsson Museum featuring fine paintings, the Asmundur Sveinsson House and the National Gallery of Iceland.

If you still haven’t had enough museum browsing, journey a bit down the road to the outskirts of town and the Arbaer Museum. This is a wonderful open-air folk museum depicting the early customs of the local people. For a refreshing pause, head back into town to the Geothermal Water Storage Tanks now known as Perlan, the Pearl. This may not sound particularly inviting, but built on this site is an architectural marvel which houses a very nice revolving restaurant.

Geysers, Hot Springs, and Hot Houses

For a look at the dramatic countryside, travel to the town of Hveragerdi where man has cleverly constructed geothermally-powered greenhouses which produce fresh vegetables and fruit (such as bananas and melons) year-round. Then continue onto the Golden Waterfalls at Gullfoss for a look at one of the country’s most beautiful water spectacles.

Geysers and mud pools dot the countryside near Geysir, from whence the word geyser actually came. Should time permit, travel from Geysir back to Reykjavik via one of the country’s most important sites, Thingvellir. On this historical spot the world’s oldest Parliament convened in the year AD 930.

The Town in Lava

Hafnarfjordur is the “town in lava.” Located less than seven miles from Reykjavik, this town of 15,000 people is built on an area that’s almost completely covered in a lava crust which dates back 7,000 years. Some of the older homes here were actually built in sheltered bowls in the rocky lava field. It should be noted that, in 1965, Apollo astronauts trained for their moon flight at Askja, part of the world’s largest lava field. It covers more than 4,500 square miles of Iceland’s terrain.

Before leaving Iceland, pick up a copy of the 700-year old *Sagas of the Icelanders*. As we sail across the mighty North

Atlantic, sink down into a deck chair, cup of tea at hand, and discover these marvelous narratives about 10th- and 11th-century Icelandic farmers who developed a sophisticated society that would undoubtedly be admired by readers even today.

– Karyn L. Planett

For more information about what to do and see in Reykjavik, please pick up a copy of our complimentary Port Description and local map at the Shore Excursions Desk.

Florist On Board? Absolutely!



What better way to dress up a special event in your stateroom, thank a fellow guest for that special party you were invited to or surprise your special

someone on his or her birthday – perhaps an anniversary.

Stop by the Reception Desk, Crystal Plaza, Deck 5, and ask how we can help you “Say it with flowers!”

CRYSTAL Celebrations



Available at the Photo Shop

Glacier Block

Designed for exclusive desktop presentation, The Glacier Block is a stylish and eye catching way to display your images. The block gives a depth and style to your image, setting it apart from other products. Mounting the print to the back of the 30mm block gives a prism effect, allowing you to view the image in different ways from many angles.

The ideal gift shipped direct to your home. Ask your photographers for more details.





Another Step in a Crystal Clean Environment

Crystal Cruises is pleased to take yet another step toward making the cruising world "Crystal Clean."

In partnership with the Hanger Network – creator of EcoHangers – we are providing environmentally friendly hangers when guests order laundry services onboard. The Crystal-branded hangers are made from 100% recycled materials and manufactured in EPA-regulated factories in the United States. Our use of the EcoHangers will help reduce the overall consumption and accumulation of wire and plastic hangers which, shoreside, amounts to over 3.5 billion wire hangers and 5 billion plastic hangers that are disposed of in landfills in America every year.

In addition, we eliminated the plastic bags previously used for delivering laundry to guests; replacing them with new, washable white cloth garment bags. By implementing the cloth garment bags, we are eliminating the use of 100,000 plastic bags per year on our ships.

"Crystal Cruises recognizes we are stewards of our oceans and we continually seek ways to minimize our impact on the environment," said Gregg L. Michel, Crystal Cruises' president. "The washable garment bags and EcoHangers are both aesthetic enhancements, as well as being more ecologically beneficial."

Environmentally-Friendly Tote Bags

Upon arrival in your stateroom or penthouse, you may have noticed a new Crystal Cruises white cotton bag placed in your closet. We are pleased to present this tote bag for you to use throughout the cruise to take your personal items to the pool or spa, or for holding your towel and other belongings when going ashore or on a shore excursion. If you wish, you may even take the bag home with you, compliments of Crystal Cruises.

Guest Laundry Reminder

In fairness to your fellow guests, we ask that you kindly keep track of your laundry and remove it in a timely manner so that others may utilize the facilities. Thank you for your kind attention.

Cellular Telephone "Quiet Zones"

You may use your mobile phone in most areas on board. However, the following areas have been designated as quiet zones where service is not available: Crystal Dining Room, Galaxy Lounge, Hollywood Theatre, Library, Starlite Club, Silk Road, Prego and Crystal Spa.

As a courtesy to all guests on board, we kindly request that you set the ring tone to silent mode, and that you be conscious of the volume of your voice when making a call.

Captain Ralf Zander and the Crystal Family wish a...

Happy Anniversary to:

Dr. & Mrs. James Hart & Joyce Getzen

Best Wishes!



Spa Savings



Aromastone Therapy

Name one way to spend an hour more relaxing than this?

Today only \$189 (usually \$213) save \$24

Spa Taster

50 minutes for **\$119**

Choose TWO out of following treatments

25-Minute Back, Neck & Shoulder Massage

25-Minute Hydrating Facial

25-Minute Foot & Ankle Massage

25-Minute Scalp Massage

Offers valid for services booked and provided today only.

Crystal Spa & Salon

Shipboard credits may be used on all Spa and Salon Services.

For more information, please call 3875 or visit the Spa on Sun Deck 12 Aft

Reykjavik, Iceland, Arrival Information

Crystal Symphony is scheduled to dock at Skarfabakki Pier in Reykjavik, Iceland, at 9:00am today, Tuesday, September 11.

An announcement is made as soon as the ship is cleared by local authorities. We ask that you please do not crowd the gangway, but make yourself comfortable until you are free to proceed ashore.

When going ashore, please remember to carry your Guest Identification Key Card, as you must show it to the officer at the gangway when re-boarding the ship.

Metered taxis are available at the pier and the cost to the center of Reykjavik is approximately US\$20.

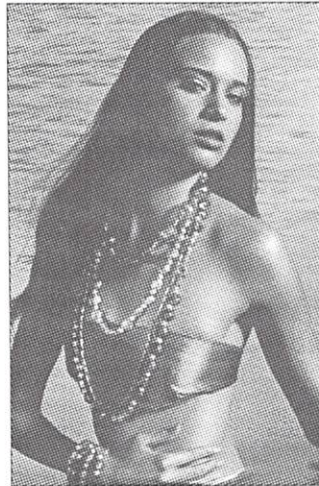
Crystal Cruises is pleased to provide a **complimentary shuttle service** from the Pier to Arnarholl located on Larkjargata near the Arnarson Statue in the city center. The first shuttle departs the pier at **9:00am** and will run on a continuous basis every 30 minutes on the hour and the half hour in each direction up until 6:30pm. Thereafter the shuttle will run hourly leaving the ship on the hour at 7:00pm, 8:00pm, 9:00pm and 10:00pm. The shuttle will return from the city hourly on the half hour at 6:30pm, 7:30pm, 8:30pm, 9:30pm and with the last return from the city at **10:30pm**.

The unit of currency in Iceland is the Icelandic Krona (ISK). The current exchange rate is US\$1.00 = approximately 122 ISK. Traveler's checks and credit cards are widely accepted. U.S. dollars, in general, are not accepted. The Visitor Center is located right at the harbor where we dock and is open from arrival until departure of our ship. Services in the visitor center include shopping (souvenirs, postcards and designer items for sale); money exchange (get local currency when you arrive and exchange upon departure); and tax free refund. **Make sure you get your tax back after shopping in Iceland. Ask for a tax-refund-voucher upon your purchase of goods and claim your tax refund in the Visitor Center.**

Crystal Symphony remains docked in Reykjavik overnight.

SHOPPING ON BOARD

Come discover the Contemporary Fashionable styles of Handmade Murano Glass from Venice.



ANTICA MURRINA VENEZIA

The glass charm emerges in the depth of color and the purity of shapes, in a mix of style and exclusive design, following the most antique processing techniques of the Murano glass tradition.

Crystal Collection

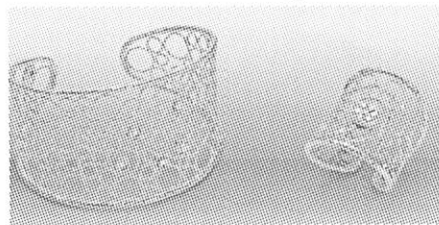
Shipboard credits may be applied to all retail purchases.

SHOPPING ON BOARD

Roberto Coin Individuality, Elegance, Passion

Visit Facets and meet our guest jeweler David Waggoner, from Roberto Coin.

Since 1977 Venetian jeweler designer, Roberto Coin, has devoted his life to a passion for innovative design. Finding inspiration in the most unlikely of places he is truly an artisan at work. Experimenting with light, texture, color, and pattern Coin's style is ever evolving. His diverse collection designed to fit every woman is defined by a common thread – a thoughtful balance of elegance and creativity.



In the turbulent world of fashion, Roberto Coin has become a pillar of unique and luxurious design; never succumbing to fleeting trends, but instead challenging himself and his contemporaries to evolve our understanding of style.

Roberto Coin trunk show available in Facets this cruise only.

FACETS Fine Jewelry Boutique

Daytime Activities

Enjoy your day in Reykjavik.

Good Morning

6:00am – 12 Noon	"The Morning Show" with Cruise Director Paul McFarland & special guest Patricia Kent. TV Channel 27		
7:30am★	Morning Walk on Water & Nordic Walking Program with Fitness Director Neil.	Promenade Deck Aft	7
8:00am★	Fitness Class: <i>Stretch</i> with Fitness Director Brian.	Fitness Center	12
8:30am	Catholic Mass is celebrated by Reverend Michael Lawlor .	Hollywood Theatre	6
8:45am★	Fitness Class: <i>Spin</i> with Fitness Director Neil.	Fitness Center	12

9:00pm **Crystal Symphony is scheduled to dock at Reykjavik, Iceland.**
 The Local Port Representative for Reykjavik is Eimskip, Ltd (Reykjavik).
 In the event of an emergency while ashore, please contact them at Tel 9.011.354.560.0700.

9:00am – 12 Noon,	The Library Is Open. Check out books, DVDs & CDs for your enjoyment		
3:00pm – 6:00pm &	during the cruise. Sign up for indoor games like chess, scrabble, mahjong, etc.		
7:30pm – 11:00pm		Library	6
11:00am	Paddle Tennis Open-Play with Fitness Director Brian. (<i>weather permitting</i>)	Wimbledon Court	12

Good Afternoon

2:00pm	Table Tennis Open-Play with Fitness Director Neil.	Horizon Deck Aft	8
2:15pm	Bridge Players meet for unhosted play.	Bridge Lounge	6
2:30pm	Movie: <i>Prometheus</i>. A team of explorers discover a clue to the origins of mankind on Earth, leading them on a journey to the darkest corners of the universe. There, they must fight a terrifying battle to save the future of the human race. R: 2:04.	Hollywood Theatre	6
3:30pm – 4:30pm	Crystal Afternoon Tea Time serenaded by the Ginger String Quartet .	Palm Court	11
4:00pm★	Fitness Class: <i>Circuit</i> with Fitness Director Neil.	Fitness Center	12
4:30pm★	Fitness Class: <i>Stretch</i> with Fitness Director Neil.	Fitness Center	12
5:00pm	5 O'Clock Funnies LIVE! Comedy clips hosted by Cruise Director Paul McFarland.	TV Channel 27	
5:00pm	Friends of Bill W. meet in...	Lido Café Aft	11
5:00pm★	Afternoon Walk on Water & Nordic Walking Program with Fitness Director Neil.	Promenade Deck Aft	7

★ Indicates Creative Learning Institute Activity



Evening Entertainment Choices

Tonight's Dress Code throughout the ship for the entire evening after 6:00pm: **CASUAL**
Blouse and pants, casual dress, or pantsuit for the ladies.
Polo shirts or open collar long/short sleeved shirts with slacks for the gentlemen.

Crystal Cove

Crystal Deck 5, Midship

Brian Donnelly plays the Crystal piano
5:15pm – 6:15pm, 7:45pm – 8:45pm
& 10:30pm – 11:30pm

The Ginger String Quartet

Serenades with classical music
7:00pm – 7:45pm & 9:30pm – 10:30pm

Palm Court

Lido Deck 11, Forward

Dance to the music by the Crystal Sextet.

5:15pm – 6:00pm
7:45pm – 8:30pm

Hollywood Theatre

Tiffany Deck 6, Forward

8:30pm & 10:30pm • **Movie: Men in Black 3**
Agent J travels in time to MIB's early years in the 1960s, to stop an alien from assassinating his friend Agent K and changing history.

Rated: PG-13, 1:47

Avenue Saloon

Tiffany Deck 6, Aft

6:45pm – 8:30pm • **Mark Farris** plays your favorite requests in our cozy bar.

10:00pm – 1:00am • **Mark Farris** sings and entertains at the piano. Come sing-along, or just sit back and enjoy!

Starlite Club

Tiffany Deck 6, Midship

Dance the night away with the **Crystal Sextet.**

Join the Ambassador Hosts.
9:30pm – 12:30am

LUXE

Tiffany Deck 6, Midship

Late Night Dancing

10:00pm – 12 Midnight

12 Midnight – Late

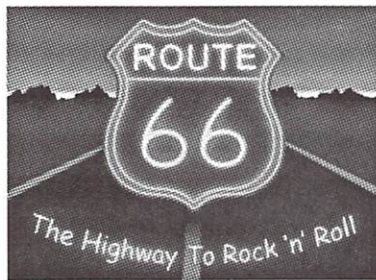
Today's Music with DJ Justice

6:45pm (Pre-Dinner Show for Late Seating) & **8:30pm** (After-Dinner Show for Main Seating)

Galaxy Lounge, Tiffany Deck 6 Forward

Production Showtime

Crystal Cruises proudly presents our non-stop road trip...



Featuring Lead Vocalists

Colleen Williamson and **Dennis Dubbin**

with the Crystal Ensemble of Singers & Dancers:

Jessica Anderson • Tamsyn Blake • Alexander Hyne

Kaleigh Jones • Olga Makarenko • Sean McFadden

Daniel Walker • Oleksandr Zaichuk

Accompanied by the **Galaxy Orchestra** under the direction of **Harry Nijkamp**

Vide/audio recording of this performance is strictly prohibited under international copyright law. For the safety of our performers, please refrain from the use of flash photography. Theatrical lighting and special effects, including strobes, smoke, haze and pyrotechnics may be used during this production. As a courtesy to fellow guests, please do not reserve seats. In order to maximize our guests' enjoyment of this evening's performance, beverage service is discontinued 10 minutes after the start of the performance.

Paul's Late Night Smile: Did you hear about the fellow whose whole left side was cut off? He's all right now.
More late night @ PaulMcFarland.com



Personal Items Reminder

All Crystal Symphony guests are reminded not to leave personal items containing high value items, Passport/Driver's License and/or checks/credit cards, laptops, cameras, iPods or any other items of value, including, but not limited to jewelry, laptops, cameras, iPods, medicine with any individuals at hotels, on buses/vehicles or left unattended under any circumstances. It is unsafe to do so and Crystal Cruises cannot accept responsibility for any such valuables, passports, driver's license, checks, credit cards or medicine left in bags that are left unattended. This includes, but is not limited to, leaving items on tour or transfer coaches, with hotel bellmen or front office staff, at hospitality desks in hotels, or unattended hotel lobbies, holding locations, pier/terminals or any other locations. Personal items containing any valuables should be in the possession of the owners at all times, without exception. Guests should not leave any such items with any individual who is not known to them, regardless of any assurances given to guests that it is safe to do so.

Please note that Crystal Cruises cannot be responsible for any loss or theft resulting from guests leaving personal items containing valuables unattended.

Crystal Adventures Shore Excursions Departure Times



All tours meet today according to the times listed below. For the comfort of all our guests, Crystal Cruises endorses a "no-tour announcement policy."

Morning Departures

REY-DX: Bridge Holiday: Relaxing in the Blue Lagoon

Departs from Crystal Plaza at 9:00am

Afternoon Departures

REY-I: Iceland Historic Exploration

Departs from Starlite Club at 1:15pm

REY-D: Relaxing in the Blue Lagoon

Departs from Starlite Club at 1:45pm

REY-A: The Blue Lagoon & Leisurely Reykjavik

Departs from Starlite Club at 1:45pm

REY-B: Fire & Ice: Volcano & Glacier Flightseeing Adventure

Departs from Starlite Club at 1:45pm

THE Master COLLECTION

Crystal Cruises offers a unique private lifestyle portrait service with its Master Collection program. Available on a very select number of cruises each year, internationally recognized & highly acclaimed Master Photographers from Great Britain are available for private commissions while sailing.

The Master Collection will capture those special moments on your cruise, providing memories that will last forever. Each private portrait commission is personalized to meet your special needs, taking full advantage of the unique architecture and ambiance of the ship, to provide a lasting memory of your cruise.

Viewings of the images created during your private commission with the Master Photographer will give you the opportunity to select from an exclusive range of presentation products. Albums, large format framed images and acrylic blocks - all crafted by Europe's premier professional photographic laboratory & delivered to your home anywhere in the world.



On this cruise we are pleased to introduce **David MacDonald**, Fellow of The British Institute of Professional Photography (BIPP) and The Master Photographers Association (MPA).

He has received numerous honors including , the Kodak United Kingdom Portrait Photographer of the Year, the MPA UK Family Portrait Photographer of the Year and the MPA UK (under 5 year olds) Portrait Photographer of the Year.

In addition, he serves as a judge for professional qualification reviews for both British photographic associations and lectures to photographers around the world.

Casual Dining Tonight

The Lido Café extends its hours and offers a special limited menu. No reservations are required for the Lido Cafe's Casual Dining and there is no extra charge for this fine dining experience.

On casual dining evenings in the Lido Café, a more relaxed attire is accepted, such as casual dresses and pantsuits for ladies, and sport shirts and slacks for gentlemen.

Ties and jackets are not required. Shorts, bathing suits, and baseball caps are not permitted after 6:00pm.

Experience Casual Dining tonight from 7:00pm to 9:00pm at the Lido Café, Lido Deck 11, aft.



Tuesday's Dining Hours

Breakfast

Lido Café, Lido Deck 11 Aft
Early-Bird Coffee (Port Side)
Early-Risers Buffet (Continental)
Breakfast Buffet

Crystal Dining Room, Crystal Deck 5 Midship
Breakfast (Open Seating)

The Bistro, Tiffany Deck 6 Midship
Late-Risers Coffee with Danish Pastries

Trident Grill, Lido Deck 11 Midship
Late-Risers Breakfast

Luncheon

Crystal Dining Room, Crystal Deck 5 Midship
Luncheon (Open Seating)

Lido Café, Lido Deck 11 Aft
Luncheon Buffet

Trident Grill, Lido Deck 11 Midship
Open for hamburgers, cheeseburgers, wraps and snacks

Ice Cream Bar, Lido Deck 11 Midship

The Bistro, Tiffany Deck 6 Midship
Bistro Snacks, Tarts and Pastries

Palm Court, Lido Deck 11 Forward
Crystal Afternoon Tea Time

Dinner

Crystal Dining Room, Crystal Deck 5 Midship
Dinner (Assigned Seating – Main Seating) 6:00pm
(Guests on Main Seating are kindly requested to be seated within the first 15 minutes)

Dinner (Assigned Seating – Late Seating) 8:30pm

Lido Café, Lido Deck 11 Aft

Casual Dining (first-come, first-served basis) 7:00pm – 9:00pm

Prego, Tiffany Deck 6 Aft (Italian Cuisine) 6:00pm – 10:00pm

Silk Road, Tiffany Deck 6 Aft (Asian Cuisine by Nobu Matsuhisa) 6:00pm – 10:00pm

The Sushi Bar, Tiffany Deck 6 Aft (Cuisine by Nobu Matsuhisa) 6:00pm – 10:00pm

The Bistro, Tiffany Deck 6 Midship
Petit Desserts and Cheeses 8:00pm – 11:00pm

Late Night Gourmet Snacks

Avenue Saloon, LUXE and Starlite Club 11:30pm – 12:30am

Reservations for Silk Road and Prego: For your convenience, reservations can be made for these specialty restaurants by dialing 3854 or 0 anytime. If you'd prefer to make reservations in person, Maître d' **Paolo Alario** is available in Prego, Tiffany Deck 6 Aft, today from 5:00pm to 6:00pm. No reservations are required for **The Sushi Bar**; seating is based on a first-come, first-served basis.

Tuesday's Bar Hours

Avenue Saloon 5:00pm – Late
The Bistro 9:00am – 11:00pm
Connoisseur Club 5:00pm – Late
Crystal Cove 10:00am – 11:30pm
LUXE 10:00pm – Late
Palm Court 3:30pm – 10:00pm
Starlite Club 5:30pm – 12:30am
Trident Bar 10:00am – 6:00pm



Today's Cocktail Suggestion Hot Toddy

Desired Spirit, Honey Lemon Slice with cloves, Cinnamon Stick and Hot Water.
Available in all open bars and lounges.

Casual Night

5:00am – 6:30am
6:30am – 7:00am
7:00am – 10:00am

7:30am – 9:30am

9:00am – 11:30am

10:00am – 11:00am

12 Noon – 1:30pm

12 Noon – 1:30pm

11:30am – 6:00pm

11:30am – 6:00pm

11:30am – 8:00pm

3:30pm – 4:30pm

Avenue of the Stars Boutiques:

Tiffany Deck 6 Midship

Apropos, Crystal Collection and Facets
Shops are closed today.

Crystal Casino, Tiffany Deck 6 Forward
Slots & Table Games: Closed today due to customs regulation.

Guests must be 21 or older to participate in monetary-based games of chance.

Computer University@Sea, Tiffany Deck
Open 24 hours. Technology Concierges available from 7:00am to 11:00pm. Keyboards available for the sight-impaired.

Concierge Desk, Crystal Deck 5 Midship
Open daily 7:30am to 7:30pm.

Cruise Sales Consultant, Crystal Deck 5
Paula Jean Pfitzer is at her desk from 9:15am to 12 Noon.

Crystal Society Hostess, Crystal Deck 5
Jaque Brown is at her desk from 9:15am to 12 Noon.

Crystal Spa & Salon, Sun Deck 12 Aft
Open 8:00am to 8:00pm including the men's and ladies' Sauna and Steam Room; phone 3875. Please note that appointments are available at your request until 10:00pm.

Crystal Spa Fitness Center, Aerobics Studio & Weight Room, Sun Deck 12 Aft
Open 24 hours. Attendant is on duty 7:30am to 8:00pm. Our Fitness Directors are available for personal training sessions.

Library, Tiffany Deck 6 Midship
Open today 9:00am to 12 Noon, 3:00pm to 6:00pm and 7:30pm to 11:00pm. Check out books, DVDs and CDs for your enjoyment during the cruise.

Medical Center, Crystal Deck 5 Forward
Located just forward of Reception Desk on the starboard side. Open 8:00am to 12 Noon and 2:00pm to 6:00pm.

Doctor's Consultation Hours: 9:00am to 10:00am; 5:00pm to 6:00pm.

Medical attention (24 hours) dial 9911. In an extreme emergency call **3333**.

Photo Shop, Tiffany Deck 6.
Closed today.

Shore Excursions Desk, Crystal Deck 5
Open today from 7:00am to 7:45am, 11:00am to 12:30pm and 5:00pm to 7:00pm.