



Crystal Symphony • Cruise 2221, No. 4

Saturday, September 8, 2012
At Sea, en Route to Akureyri, Iceland
Sunrise: 6:53am • Sunset: 8:24pm

Keeping Our World "Crystal Clean"

Keeping our environment Crystal Clean has long been one of our goals at Crystal Cruises. Throughout the two decades that Crystal has been sailing the oceans of the world, significant strides have been made worldwide in technologies and practices that help keep the seas as free as possible from harmful substances.



Nothing Overboard

Crystal was a pioneer in cruise line environmental efforts when we first introduced our Crystal Clean program in 1991. Later in 2004, we implemented our Environmental Management System (EMS), which continues to be ISO 14001 certified and meets the international standards for successful environmental management. In order to maintain our certification, annual internal and external audits are required to ensure we are following our established procedures. Our EMS policies and practices dictate that nothing is to be discarded overboard.

Crystal Clean Begins with the Crew

Every crew member is trained in our environmental policies and practices. Crew members sign a statement indicating they have read and understand the environmental policy. Monthly environmental meetings are also held to ensure that the latest policies and procedures are continuously reviewed and improved where possible.

Waste Streams

There are two basic ways to manage waste streams. One is to improve how each waste stream is processed. The other is to reduce the amount of waste from the very beginning. To address the later side of this equation, we upgraded many onboard items to make them better for the environment. Some time ago, paper cups replaced Styrofoam; wood lint brushes replaced disposable plastic lint removers; stainless steel ice buckets replaced plastic buckets; and plastic laundry bags and shoe bags have been replaced with cloth versions. We have also now introduced reusable paper hangers and cloth bags for delivering guests clothes from the laundry. Plus a Crystal Cruises cloth tote bag is available in all guest rooms as a gift. Not only can you use the tote bag on shoreside visits during your cruise, but you can utilize it at home in place of plastic bags.

So now that we all know how to reduce the amount of waste, what happens with the waste that is generated on board? Crystal ships are equipped with modern waste management equipment to process trash and sewage. And, believe it or not, the process starts with

continued...

Evening Dress Code: Informal

Ladies: cocktail party dress or pantsuit
Gentlemen: Jacket & slacks, tie optional

Today's Notices

Asia Café Buffet



Enjoy a sumptuous lunch time buffet of Asian-inspired cuisine today at our Asia Café in the Lido Café, Lido Deck 11 from 12 Noon to 1:30pm.

Guest Laundry Reminder

In fairness to your fellow guests, we ask that you kindly keep track of your laundry and remove it in a timely manner so that others may utilize the facilities. Thank you for your kind attention.

Headline Comedy Entertainer



Crystal Cruises proudly presents comedian **Kelly McDonald**, at 8:30pm and 10:30pm in the Galaxy Lounge.

Time Change Reminder

As Crystal Symphony sails into a new time zone tonight, we remind you to set your clocks and watches **BACK One Hour** before retiring this evening, Saturday, September 8, 2012

continued from front page ...

you, our guest, when you sort and place items in the appropriate recycling and trash bins on the outside decks. This initial sorting is tremendously helpful in reducing waste. Sorting is also done by the stewardesses and other cleaning staff prior to the final sorting done in the garbage room. After all sorting has been finished the trash goes into an onboard incinerator or is landed ashore to be managed by reputable waste management companies.

Wastewater is collected, treated in accordance with international, federal and state regulations, and its disposal is strictly managed by Crystal. International standards say that graywater — water from laundry rooms and showers, for instance — can be discharged into the sea virtually anywhere, including in ports. However, the more restrictive U.S. federal and state requirements effectively limit discharge to more than three nautical miles from land for the U.S. coasts. We, however, go one step further and follow a voluntary policy of only discharging treated graywater when we are at least 12 nautical miles from shore. Treated blackwater (or sewage) is also discharged at least 12 nautical miles from shore — a practice that exceeds international regulations which provide for discharge a minimum of only three nautical miles from shore.

Conserving in Your Stateroom

Staterooms are one of the places where guests can help conserve resources. Several years ago we initiated a towel program, inviting guests to hang their towels to be used again, rather than have all the towels laundered each day. With the support of our guests, this program has been very successful.

Recycling Efforts

As you see, we go to great lengths to help ensure a Crystal Clean environment, and part of that effort means recycling materials wherever and whenever feasible. Many of our publications,

Reflections, *Passport* magazine, and brochures, are printed using recycled or partially recycled materials. While the ships print menus that are used for only one meal, those menus are then returned to the ship's print shop and printed again on the reverse side and used for crew notices and forms, including the forms used by the waiters to take your order. They are also cut into handy sizes and recycled as notepads used all over the ship.

Reducing Energy Consumption

To minimize our impact on the environment and, secondarily, to improve lighting effects on board, a consultant was hired to analyze power consumption. As a result, new light bulbs and lighting fixtures have been installed that enhance the ambiance on board, while still reducing overall energy consumption.

Crystal Cruises recognizes and supports the mission of the United Nations to preserve the world's natural resources for future generations. We kindly request that our guests assist us in this endeavor by doing your part to reduce waste and energy consumption, and to abide by our Crystal Clean policy, and never throw anything overboard into these beautiful oceans that we enjoy sailing on.

With your help, we can keep our wonderful world, Crystal Clean.



INFORMAL PORTRAITS
TONIGHT BEFORE &
AFTER DINNER.

NO APPOINTMENT NECESSARY
NO OBLIGATION

CRYSTAL PLAZA DECK #5

PERSONALITY PROFILE

Comedy Entertainer Kelly McDonald

Bucking the standards of today's popular comedy world, **Kelly McDonald** is known for "sticking to his guns" and treating his



audiences to a genuinely clean and classy style of humor. The product of a small-town Irish-Catholic upbringing in the farmlands of New York State, he surprised many when

upon graduating from college, he packed up and moved to Las Vegas, intent on a career in stand-up. He gained valuable experience there, performing mostly in country bars and rock clubs when musicians would grant him stage time during their breaks.

Television soon beckoned and Kelly's next stop was Los Angeles. A guest spot on the Merv Griffin Show led to appearances on the Tonight Show with both Johnny Carson and Jay Leno. Seen these days on casino, cruise and corporate stages, Kelly is also prominently featured on Sirius Satellite Radio's "Laugh USA".

Enjoy Kelly McDonald's show at 8:30pm and 10:30pm in Galaxy Lounge.

Captain Ralf Zander and the Crystal Family wish a...

Happy Birthday to:

Mrs. Sylvia Beliveau
Miss Joy LeRoy
Mrs. Nancy Schein
Mrs. Virginia Whitesell

Happy Anniversary to:

Mr. & Mrs. Arthur & Isabelle Jones

Best Wishes!



SeaMobile

Note: SeaMobile is a special service offered for the convenience of our guests. Since not all carriers can utilize this service, we strongly encourage you to contact your home service provider to determine if they allow access.

Through an agreement with SeaMobile, a leading provider of satellite-based broadband services, Crystal Cruises lets you take advantage of your wireless devices while at sea. Once the ship reaches 12 nautical miles off shore, you can use your own mobile phone and telephone number to keep in touch both with fellow travelers on board, as well as with friends and family ashore.

To connect, first make sure you have authorized service from your home provider to dial international phone numbers. Then, use your mobile phone and telephone number the same way you would ashore. Most compatible devices connect automatically the power is turned on. Your mobile phone settings should be set to Automatic Network Selection.

When calling the U.S., Canada, Mexico or the Caribbean, dial as you would on a land line (1, the area code and phone number). To reach other international destinations, dial 011, the country code and phone number. If you do not know the country code, please contact your home service provider. While using this system, you may see the following on your cell phone display: 901 Nor, 901 18, Cellular at Sea, or Maritime. This simply indicates you are roaming and international maritime roaming rates will apply.

To avoid interference with land-based wireless networks, the SeaMobile system will only be available when the ship is at least 12 nautical miles from land. When in port, you can connect to local roaming networks, as permitted by your home carrier. Charges for using the SeaMobile system are outlined on a card provided on the bedside table in your stateroom.

You may use your mobile phone in most areas on board. However, the following areas have been designated as quiet zones where service will not be available:

Crystal Dining Room, Galaxy Lounge, Hollywood Theatre, Library, Starlite Club, Silk Road and Sushi Bar, Prego and Crystal Spa. As a courtesy to all guests on board, we kindly request that you set the ring tone to silent mode, and that you be conscious of the volume of your voice when making a call.

Text messaging on your mobile phone and compatible GSM device, as well as service for Internet-enabled devices such as Blackberry®, is also available as long as you have these services through your home carrier. Again, fees and other charges may be added by your home wireless service provider, and charges will be billed by your home carrier.

For complete details and rates, refer to the SeaMobile pages in the Telephone Guide section of the stateroom directory. There may be other costs, such as taxes and fees, associated with using these services, which may be charged by your home carrier or service provider. In addition, you may wish to check with your specific service provider for any additional charges that may be incurred.

Satellite Reception

All electronic communication to and from the ship is via satellite. Interruptions in satellite reception can occur at any time without notice. While we regret this, and apologize for any inconvenience it may cause, Crystal Cruises cannot guarantee that communication connections for telephone, television, Internet, e-mail or fax will be available at all times in all areas of the world.

Charging Your Stateroom Phone

When not using the cordless telephone in your stateroom, we kindly suggest that you return the phone to its docking station in order for it to remain fully charged. The red button in the bottom left corner should light up when the phone is properly placed.

Smoking Policy Reminder

Crystal Cruises kindly asks guests to observe the non-smoking areas, which have been created for the comfort and enjoyment of everyone on board. As stated in our Cruise Atlas and in the embarkation issue of Reflections, smoking is not permitted on penthouse and stateroom verandahs. We thank you for your consideration in making Crystal Symphony a more comfortable environment for all guests.

MEET TODAY'S LECTURERS

Celebrity Lecturer General Perry M. Smith

Perry M. Smith is a teacher, author and TV and radio commentator. A retired major general, Smith served for 30



years in the U. S. Air Force. During his military career he commanded an F-15 fighter wing, was the top Air Force planner and the commandant of the National War

College. In 1968 and 1969 he flew 180 combat missions over North Vietnam and Laos.

A graduate of the U. S. Military Academy, he later earned a Ph.D. in International Relations from Columbia University. His six books include *Assignment Pentagon* and *Rules and Tools for Leaders*.

He serves the boards of the Congressional Medal of Honor Foundation, the Augusta Museum of History and the Augusta Warrior Project.

Smith is married to the former Connor Cleckley Dyess. The Smith's have two children and five grandchildren-all who live on the West Coast. Connor is the daughter of Jimmie Dyess, the only person to earn America's two highest awards for heroism.

Join General Perry Smith for the first of his presentations at 10:00am in the Starlite Club.

Special Interest Lecturer John Loesser

John Loesser grew up with the theater in his blood.. literally. The son of legendary composer lyricist and Broadway



giant Frank Loesser, John was immersed in the world of show business from the days of his early childhood. By age 16, he was assisting major Broadway producers

in such renowned productions as *Pippin* and *Mame*.

Loesser's career has included such highlights as producing award-winning theater in Los Angeles, and serving as Executive Director for theaters throughout New York, Pennsylvania and Florida. He is a member of the International Society of Performing Arts Administrators and the Florida Professional Presenters. Today, Loesser is the Executive Director of the Lyric Theatre in Stuart, Florida, and also consults on theater construction, programming and management. He has been instrumental in the development of productions such as *An Evening with Burt Reynolds* and *My Mother's Italian, My Father's Jewish, and I'm in Therapy*. He remains involved in projects for Frank Loesser Enterprises.

Join John Loesser for the first of his presentations at 1:30pm in the Starlite Club.

Special Interest Lecturer Jay Christofferson

Dr. Jay P. Christofferson earned his Bachelor of Science degree in zoology from the University of Utah in 1961, a



master's degree in 1964 and Ph.D. in 1970 in zoology from the University of Hawaii. He was employed at California State Univer-

sity, Stanislaus (CSUS) from 1970 to 1996, where he was promoted from assistant professor to professor. He served as the biology department chairman for three years, associate dean of the College of Arts, Letters, and Sciences (ALS) for four years and the interim dean of the College of ALS for two years. He left CSUS to become the dean of the School of Science and Natural Resources at Lake Superior State University, where he served until accepting the position of vice president, academic affairs at the California Maritime Academy, a campus of the California State University system. He retired from this position June 30, 2004.

Join Jay Christofferson for the first of his presentations at 3:30pm in the Starlite Club.

 SMILE

Teeth whitening service available at the Spa!

FAST – EASY – SAFE – EFFECTIVE

Only \$149

Ask for your free smile consultation.

Look years younger, in just minutes.



Crystal Spa & Salon

Shipboard credits may be used on all Spa and Salon Services.

For more information, please call 3875 or visit the Spa on Sun Deck 12 Aft



Good Morning

6:00am – 12 Noon	"The Morning Show" with your hosts Cruise Director Paul McFarland and Patricia Kent.	TV Channel 27	
7:30am★	Morning Walk on Water & Nordic Walking Program with Fitness Director Brian.	Promenade Deck Aft	7
8:00am★	Fitness Class: Yoga with Fitness Director Brian.	Starlite Club	6
8:45am★	Fitness Class: Spin with Fitness Director Brian.	Fitness Center	12
9:00am	Captain's Update. The latest weather and navigation information.	PA System & Ch. 52	
9:05am	Pilates with instructor Jennifer Crane.	Palm Court	11
9:15am★	CU@Sea Class: Downloading Digital Images Lecture with Instructor Chip Adam. <i>(Space is limited; pre-registration required)</i>	The Studio	6
10:00am	Crystal Visions Enrichment Program. Celebrity Lecturer Major General Perry Smith presents "Learning from Heroes: Stories of the Medal of Honor and the Carnegie Medal recipients." <i>(Broadcast live on TV Ch 29; Rebroadcast on TV Ch 28: 12 Noon to 4:00pm.)</i>	Starlite Club	6
10:00am	Fitness Seminar: Perfect Posture. Our health & fitness experts teach you how to improve your quality of life.	Avenue Saloon	6
10:00am – 11:00am	Beginner's Bridge Lesson with Instructor Susan Carter. At this time, the Bridge Lounge is reserved for lessons only. Thank you.	Bridge Lounge	6
10:15am★	CU@Sea Lecture: Basic Digital Photo Finishing Using Photoshop Elements 9 with the Instructor Chip Adam. <i>(Space is limited; pre-registration required)</i>	The Studio	6
10:45am★	TaylorMade Golf Clinic with PGA Golf Teaching Professional John Clark. "Golf Swing Development, Drills for a Repeating Swing Part 1" <i>(Inclement weather: Deck 11 landing, outside Fantasia)</i>	Golf Nets	12
11:00am	Pain Relief with Acupuncture. Discover with our Acupuncturist, Spencer Shimabukuro, how acupuncture is a viable option to address back pain.	LUXE	6
11:00am	BINGO hosted by the Crystal Casino. <i>Please note appropriate daytime dress code is appropriate attire for Bingo; no robes. (Game starts at 11:15am)</i>	Starlite Club	6
11:00am★	USC Digital Filmmaking Course iMovie for the iPad. "How to Tell Your Story" with Instructors Kerry Millerick & Dina Sterr. <i>(Pre-registration in CU@Sea & your own iPad with iMovie pre-loaded required. Participation is very limited.)</i>	Avenue Saloon	6
11:00am★	Paddle Tennis Open-Play with Fitness Director Neil. <i>(weather permitting)</i>	Wimbledon Court	12
11:00am	Master Photographer Talk with photographer David MacDonald.	Hollywood Theatre	6
11:00am – 12 Noon	Intermediate Bridge Lesson with Instructor Susan Carter. At this time, the Bridge Lounge is reserved for lessons only. Thank you.	Bridge Lounge	6
11:15am – 12 Noon★	Berlitz Spanish Language, AM Class with Instructor Maribel Morales. <i>(Limited space; please register in the Library.)</i>	The Studio	6
11:30am – 12:30pm	Brian Donnelly plays the Crystal Piano for your midday cocktail pleasure.	Crystal Cove	5

★ Indicates Creative Learning Institute Activity.

Good Afternoon

12 Noon	Team Trivia hosted by Jessica from the Crystal Ensemble.	Starlite Club	6
12 Noon – 1:00pm	Free Gaming Lessons. Get all the tips from our experts.	Crystal Casino	6
1:30pm	Crystal Visions Enrichment Program. Special Interest Lecturer John Loesser presents "Backstage with the Stars." <i>(Broadcast live on TV Channel 29; Rebroadcast on TV Channel 28: 4:00pm to 8:00pm.)</i>	Starlite Club	6
1:30pm – 2:30pm	Poolside Music with the Crystal Sextet <i>(weather permitting)</i> .	Seahorse Pool	11
2:00pm	Spa Seminar: <i>Cleanse Yourself Within.</i> Bloating, fluid and water retention are many challenges the body faces throughout the years. Join Kiva, our body specialist, and she will educate you on how to combat these and live with a happier, healthier body.	Avenue Saloon	6
2:15pm*	CU@Sea Class: iPad Just the Basic Lecture with Instructor Chip Adam. <i>(Space is limited; pre-registration required)</i>	The Studio	6
2:15pm – 3:00pm	Beginners Needlepoint get together with Activities Hostess Mari. <i>(Please bring your kit.)</i>	Palm Court, Strbd. Side 11	11
2:15pm – 4:15pm	Duplicate and Social Bridge with Instructor Susan Carter. At this time, the Bridge Lounge is reserved for bridge games only. Thank you.	Bridge Lounge	6
2:30pm	Movie: <i>Battleship.</i> A fleet of ships is forced to do battle with an armada of unknown origins in order to discover and thwart their destructive goals. Rated: PG-13: 2.12	Hollywood Theatre	6
2:30pm	Complimentary Dance Class. Salsa with Instructors Adam and Patricia Kent and the Ambassador Hosts. <i>(Beginners welcome and no partner required)</i> .	Starlite Club	6
3:00pm*	Odyssey Art at Sea with Instructor Agnes Vacarelli. "Getting Acquainted – with medium, tools, techniques and color."	Lido Café, Port Side	11
3:00pm	Table Tennis Open-Play with Fitness Director Brian.	Horizon Deck Aft	8
3:15pm*	CU@Sea Class: Very Basic Word Processing with Instructor Chip Adam. <i>(Space is limited; pre-registration required)</i>	The Studio	6
3:15pm*	TaylorMade Golf Clinic with Golf Teaching Professional John Clark. "Golf Swing Development, Drills for a Repeating Swing, P2." <i>(Inclement weather location: Deck 11, outside Fantasia)</i>	Golf Nets	12
3:30pm	Crystal Visions Enrichment Program. Special Interest Lecturer Jay Christofferson presents "Whales. Learn how to identify the major groups of animals and how these animals have adapted to this environment." <i>(Broadcast live on TV Channel 29; Rebroadcast on TV Channel 28: 8:00pm to 12 Midnight.)</i>	Starlite Club	6
3:30pm – 4:30pm	Crystal Afternoon Tea Time serenaded by the Ginger String Quartet.	Palm Court	11
4:00pm*	Fitness Class: <i>Abs</i> with Fitness Director Neil.	Fitness Center	12
4:30pm*	Fitness Class: <i>Stretch</i> with Fitness Director Brian.	Fitness Center	12
4:30pm	Friends of Bill W. meet in...	Lido Café Aft	11
4:45pm – 5:30pm*	Berlitz Spanish Language, PM Class with Instructor Maribel Morales. <i>(Limited space; please register in the Library.)</i>	The Studio	6
5:00pm	5 O'Clock Funnies LIVE! Comedy clips hosted by Cruise Director Paul McFarland.	TV Channel 27	
5:00pm*	Afternoon Walk on Water & Nordic Walking Program with Fitness Director Neil.	Promenade Deck Aft	7
5:30pm	Catholic Vigil Mass is celebrated by Reverend Michael Lawlor.	Hollywood Theatre	6

* Indicates Creative Learning Institute Activity.



PERSONALITY PROFILES

Dance Instructors

Adam Kent & Patricia Kent



Adam Kent and Patricia Kent are a professional Ballroom and Latin American sibling dance team with over 20 years experience competing and performing throughout the world.

Adam and Patricia recently returned from Singapore where they took part in the pilot season of *Dance Star Asia*, Singapore's version of *Dancing with the Stars*.

They have toured the United States in a Ballroom Dance Show *Simply Ballroom* hosted by the legendary Debbie Reynolds. Prior to this, they performed in *Simply Ballroom* nightly in Las Vegas at the Golden Nugget Hotel & Casino. Adam and Patricia performed in the Tango scene in the movie version of the Broadway spectacular *RENT*. They traveled around

the United States as featured dancers in Clay Aiken's Joyful Noise tour.

Further testament to their abilities are the many competitions they have won, including the Australian Crown (three times), the Essex Championship (twice), and the Bangkok and Taipei International Championships.

Adam and Patricia have performed Latin American dance styles on stage around the globe alongside artists such as Debbie Reynolds, Clay Aiken, Michael Bolton & Wayne Newton and for guests the likes of Oprah Winfrey, David Foster, Simon Fuller, Larry King & Quincy Jones, and they have been seen on the hit TV program *The Suite Life of Zack & Cody*, *The Bill Engvall Show* and were featured in the original FOX promo for *So You Think You Can Dance*.

Adam and Patricia are originally from Melbourne, Australia. They trained for several years in London, England and now reside in the United States.

Join the complimentary dance class with Adam & Patricia Kent at 2:30pm in Starlite Club.

CU@sea Instructor Chip Adam

Most days in sunny Southern California, **Chip Adam** can be found hovering above the ocean, testing the latest airplane, heli-



copter or some other innovative aviation creation. His "day" job is that of test pilot for the Federal Aviation Administration, Aircraft Certification Service in Los Angeles, California.

He is currently one of the FAA's test pilots assigned to the Boeing 787 "Dream-Liner", 747-800 airplanes and Robinson R-66 helicopter certification team which is scheduled for completion this year, and he supports numerous other helicopter and small aircraft projects.

During his impressive career, he served as test pilot on the certification of the MD-11 and as the focal point for restricted category versions of the Lockheed C-130, P-3, L-188 "Electra" and for the integration of advanced cockpit automation consisting of Synthetics and Enhanced Vision Systems. He was also the lead test pilot for the MD-10.

In addition to his bachelor's degree in electrical engineering, Mr. Adam holds a master's degree in business administration, and is a graduate of the U.S. Navy Test Pilot School. During his 22 years of military service, he served as an experimental test pilot on assignments at NASA's Ames Research Center, worked on developmental testing at Edwards Air Force Base and did operational flight testing at the U.S. Pentagon.

Mr. Adam is a member of the Society of Experimental Test Pilots, the American Institute of Aeronautics and Astronautics, the Society of Automotive Engineers, and the SAE's G-10 Committees for heads-up displays.

Join the first CU@sea class with Chip Adam at 9:15am in the Studio.

SHOPPING ON BOARD

Apropos shop, Avenue of the Stars "Mad Autumn" bargain



TODAY ONLY!

DOORS OPEN AT 9 AM

Up to **75% off** on clothing – end of line and one off sizes, jewelry and beauty products.

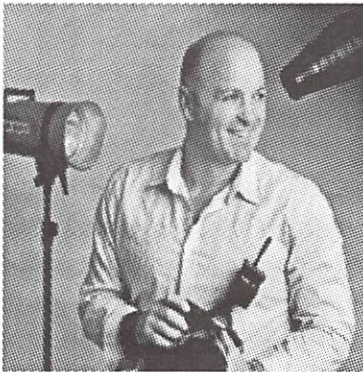
APROPOS FACETS
Crystal Collection

HOLLYWOOD THEATRE

Saturday, September 8, at 11:00am

Beautiful Portraits – You Must Have a Great Camera!

Informal talk by Master photographer David MacDonald with illustrations of his work as a professional portrait photographer



David is a Fellow of both the British Institute of Professional Photography (BIPP) and the Master Photographers Association (MPA). He has received numerous honors including , the Kodak United Kingdom Portrait Photographer of the Year, the MPA UK Family Portrait Photographer of the Year and the MPA UK (under 5 year olds) Portrait Photographer of the Year. In addition, he serves as a judge for professional qualification reviews for both British photographic associations and lectures to photographers around the world.

SHOPPING ON BOARD



H. Stern

Crystal Symphony is pleased to welcome the unique and inspiring jewelry from internationally renowned Brazilian jewelers,

Available in Facets throughout this cruise.

Precious, Beautiful, Bright

The unique and inspiring jewellery from internationally renowned Brazilian jewelers.

FACETS

Fine Jewelry Boutique

Shipboard credits may be applied to all retail purchases.



Evening Entertainment Choices

Dress Code throughout the ship for the entire evening after 6:00pm: **INFORMAL**
Ladies: Cocktail party dress or pants suit
Gentlemen: Jacket and slacks; a tie is optional

Crystal Cove

Crystal Deck 5, Midship

Brian Donnelly plays the Crystal piano
5:15pm – 6:15pm, 7:45pm – 8:45pm
& 10:30pm – 11:30pm

The Ginger String Quartet

serenades with classical music
7:00pm – 7:45pm & 9:30pm – 10:30pm

Palm Court

Lido Deck 11, Forward

Join the Ambassador Hosts.
5:15pm – 6:00pm
7:45pm – 8:30pm

Jazz with the Galaxy Orchestra

9:30pm – 12 Midnight

Avenue Saloon

Tiffany Deck 6, Aft

6:45pm – 8:30pm • **Mark Farris** plays your favorite requests in our cozy bar.
10:00pm – 1:00am • **Mark Farris** sings and entertains at the piano. Come sing-along, or just sit back and enjoy!

10:00pm – 50's & 60's Hour

Hollywood Theatre

Tiffany Deck 6, Forward

8:30pm & 10:30pm

Movie: *Bel Ami*

A chronicle of a young man's rise to power in Paris via his manipulation of the city's most influential and wealthy women. R; 1:42

Starlite Club

Tiffany Deck 6, Midship

Dance the night away with the **Crystal Sextet**.

9:30pm – 12:30am

LUXE

Tiffany Deck 6, Midship

Late Night Dancing

DJ Justice plays your favorite dance music from

10:00pm – Late



4:45pm • Galaxy Lounge • One Show Only

Zero Hour

Starring Jim Brochu

Winner

New York Drama Desk Award Best Solo Show • Washington Helen Hayes Award Best Actor
South Florida Carbonell Award Best Actor • Los Angeles Ovation Award Best Play

“Captivating”
- New York Times

8:30pm & 10:30pm

Galaxy Lounge, Tiffany Deck 6 Forward

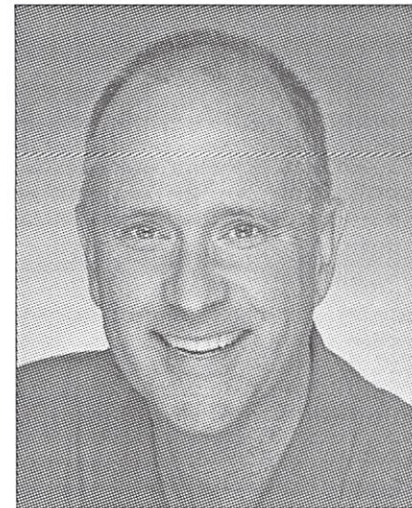
IN TOWN TONIGHT

Crystal Cruises proudly presents...

Headline Comedy Entertainer

Kelly McDonald

Vide/audio recording of this performance is strictly prohibited under international copyright law. In order to maximize our guests' enjoyment, beverage service is discontinued 10 minutes after the start of the performance.



Paul's Late Night Smile: He who hesitates is not only lost, but is miles past his exit. More late night @ PaulMcFarland.com



Saturday's Dining Hours

Breakfast

Lido Café, Lido Deck 11 Aft
Early-Bird Coffee (Port Side)
Early-Risers Buffet (Continental)
Breakfast Buffet

Crystal Dining Room, Crystal Deck 5 Midship
Breakfast (Open Seating)

The Bistro, Tiffany Deck 6 Midship
Late-Risers Coffee with Danish Pastries

Trident Grill, Lido Deck 11 Midship
Late-Risers Breakfast

Luncheon

Crystal Dining Room, Crystal Deck 5 Midship
Luncheon (Open seating)

Lido Café, Lido Deck 11 Aft
Asia Café Buffet

Trident Grill, Lido Deck 11 Midship
Open for hamburgers, cheeseburgers, wraps and snacks

Ice Cream Bar, Lido Deck 11 Midship

The Bistro, Tiffany Deck 6 Midship
Bistro Snacks, Tarts and Pastries

Palm Court, Lido Deck 11 Forward
Crystal Afternoon Tea Time

Dinner

Crystal Dining Room, Crystal Deck 5 Midship

Dinner (Assigned Seating – Main Seating) 6:00pm
(Guests on Main Seating are kindly requested to be seated within the first 15 minutes)

Dinner (Assigned Seating – Late Seating) 8:30pm

Prego, Tiffany Deck 6 Aft (Italian Cuisine) 6:00pm – 10:00pm

Silk Road, Tiffany Deck 6 Aft (Asian Cuisine by Nobu Matsuhisa) 6:00pm – 10:00pm

The Sushi Bar, Tiffany Deck 6 Aft (Cuisine by Nobu Matsuhisa) 6:00pm – 10:00pm

The Bistro, Tiffany Deck 6 Midship
Petit Desserts and Cheeses 8:00pm – 11:00pm

Late Night Gourmet Snacks

Avenue Saloon, LUXE, Palm Court and Starlite Club 11:30pm – 12:30am

Reservations for Silk Road and Prego: For your convenience, reservations can be made for these specialty restaurants by dialing 3854 or 0 anytime. If you'd prefer to make reservations in person, Maitre d' **Paolo Alario** is available in Prego, Tiffany Deck 6 Aft, today from 5:00pm to 6:00pm. No reservations are required for **The Sushi Bar**; seating is based on a first-come, first-served basis.

Saturday's Bar Hours

Avenue Saloon 5:00pm – Late
The Bistro 9:00am – 11:00pm
Connoisseur Club 5:00pm – Late
Crystal Cove 10:00am – 11:30pm
LUXE 10:00pm – Late
Palm Court 11:00am – 12 Midnight
Starlite Club 5:30pm – 12:30am
Trident Bar 10:00am – 6:00pm



Today's Cocktail Suggestion

Negroni

Bombay Sapphire, Campari and Sweet Vermouth.

Available in all our bars and lounges.

Informal Night

5:00am – 6:30am
6:30am – 7:30am
7:30am – 10:00am

8:00am – 9:30am

9:00am – 11:30am

10:00am – 11:00am

12 Noon – 1:30pm

12 Noon – 1:30pm

11:30am – 6:00pm

11:00am – 6:00pm

11:30am – 8:00pm

3:30pm – 4:30pm

Avenue of the Stars Boutiques:

Apropos, **Crystal Collection** and **Facets**
Open today from 9:00am to 9:00pm.

Crystal Casino, Tiffany Deck 6 Forward
Slots: 10:00am to 2:00am

Table Games: 1:00pm to 6:00pm and 8:00pm to 2:00am. Guests must be 21 or older to participate in monetary-based games of chance.

Computer University@Sea, Tiffany Deck 6.
Open 24 hours. Technology Concierges available from 7:00am to 11:00pm. Keyboards available for the sight-impaired.

Concierge Desk, Crystal Deck 5 Midship
Open daily 7:30am to 7:30pm.

Cruise Sales Consultant, Crystal Deck 5
Paula Jean Pfitzer is at her desk from 9:00am to 12 Noon and 3:00pm to 5:00pm. Take a look at our exciting upcoming 2013 & 2014 itineraries available at Paula Jean's desk.

Crystal Society Hostess, Crystal Deck 5
Jaque Brown is at her desk from 8:30am to 11:30am and 2:30pm to 4:30pm.

Crystal Spa & Salon, Sun Deck 12 Aft
Open 8:00am to 8:00pm including the men's and ladies' Sauna and Steam Room; phone 3875. Please note that appointments are available at your request until 10:00pm.

Crystal Spa Fitness Center, Aerobics Studio & Weight Room, Sun Deck 12 Aft
Open 24 hours. Attendant is on duty 7:30am to 8:00pm. Our Fitness Directors are available for personal training sessions.

Library, Tiffany Deck 6 Midship
Open today 8:30am to 12 Noon, 1:30pm to 6:00pm and 7:30pm to 11:00pm. Check out books, DVDs and CDs for your enjoyment during the cruise.

Medical Center, Crystal Deck 5 Forward
Located just forward of Reception Desk on the starboard side. Open 8:00am to 12 Noon and 2:00pm to 6:00pm.

Doctor's Consultation Hours:
9:00am to 10:00am; 5:00pm to 6:00pm.
Medical attention (24 hours) dial 9911. In an extreme emergency call **3333**.

Photo Shop, Tiffany Deck 6
Open today from 9:30am to 2:00pm and 5:30pm to 10:00pm. We're taking informal portraits & ocean view portraits this evening.

Shore Excursions Desk, Crystal Deck 5
Open today from 9:00am to 7:00pm.

Printed on Recycled Paper

