



Crystal Symphony • Cruise 2221, No. 3

Friday, September 7, 2012
Dublin, Ireland
6:30am – 6:00pm
Sunrise: 6:33am • Sunset: 8:16pm
Forecast: Partly Cloudy, 68°F / 20°C

Dublin, Ireland — Rich in Beauty and History

Stand topside as the morning light filters through the slate-gray clouds. Behind you spread the cold green waters of the Irish Sea. Wrapped in a warm Irish tweed overcoat which found its way from this country to your hometown and now back, you'll find this morning chill refreshing, energizing.

As the low-lying outline of Dublin crests the horizon, a gentleman nearby remembers how, so very long ago, his hopeful ancestors stepped aboard an overcrowded vessel in this port and embarked on a journey to the promising shores of America. In this new land these Irish immigrants could escape the wrenching poverty which so long oppressed them here and, steeled by strong wills and stronger backs, they could carve out a new and better life. The gentleman has sailed to Ireland to pay tribute to his ancestors who, because of their courage and foresight, have allowed him to have a better life.

Whether or not your ancestors embarked for America from these shores, or other lands, much of America's history began where you shall now walk, in the rich – and recently made more peaceful than ever – country of Ireland.

A Rich Past

Archaeologists tell us that Ireland's early inhabitants probably walked here across the now-disconnected land that stretched from Scandinavia to Scotland. These settlers eked out a meager existence until the Celtic tribes arrived. Through intermarriage and the introduction of more sophisticated tools, the people began to prosper. Next, the Romans came leaving their mark as well. Then the Vikings whose wrath was felt throughout Europe, from what is now Russia to Ireland to Iceland. The Norsemen arrived in a fleet of 60 long ships, putting fear into the hearts of all who witnessed their arrival.

The English established their hold when Henry VIII bestowed upon himself the title of "King of Ireland." Catholic farmlands were confiscated and distributed

continued on next page



The stately entrance to Dublin Castle

Evening Dress Code: **Casual**

Ladies: Blouse & pants, casual dress, pantsuit
Gentlemen: Long/short-sleeved shirt & slacks

Important Notices

Welcome to Dublin

Crystal Symphony is scheduled to dock at Dublin, Ireland, at 6:30am today, Friday, September 7, 2012. Please see *Arrival Information* inside for further details.

Crew Fire and Lifeboat Drill

Today, the officers, staff and crew of Crystal Symphony practice safety procedures as they participate in a crew emergency muster at 10:00am. Guests are not involved in this drill, however, please note that guest services are slightly interrupted for the duration of the drill.

VAT Refunds

VAT Refund representatives are located in the Crystal Plaza, Deck 5 from 3:00pm to 5:30pm in order to process your tax refunds. Please note that when claiming a refund, you must present the purchase in the bag without being opened with the seal not broken and completed tax form from the shop with the receipt

Entertainment Tonight

Join the international virtuoso **Gary Arbuthnot** for "Music From the Stage and Screen" at 7:00pm and 8:30pm in the Galaxy Lounge.

Piano Cabaret Show

Join piano entertainer **Mark Farris** for a special cabaret show at 10:15pm in the Starlite Club.

continued...

to Protestant farmers. Then William of Orange, a Protestant ruler, defeated James II, a Catholic, in the 1690 Battle of the Boyne.

In 1800 the Irish Parliament voted to create the United Kingdom of Great Britain and Ireland. The basic population was not so affected by this decision as they were simply trying to survive a great potato famine which hit the country. Thankfully Dublin was not an area that was greatly affected, however this horrible famine caused one million deaths across the country. And as a result of this desperation, one million more left Ireland and emigrated to other countries.

The City Called Dublin

As the capital of Ireland, Dublin is a tidy city filled with history, traditional architecture, a spirited population and a warm welcome for visitors from abroad. Clinging to the banks of the River Liffey, it is small, compact and easily walkable for those who have come to explore. While Dublin Bay is active with fishing trawlers, and the waterfront offers a look at the city's colorful side, you'll want to concentrate your explorations in the downtown area.

A Few Important Citizens

The German-born composer Handel penned the majority of the Messiah here in this city. Dublin was also the site of this great oratorio's first performance in 1742. The poet W.B. Yeats (1865-1939) was one of the founding fathers of the Abbey Theatre in 1904, which showcased works by such important playwrights as Sean O'Casey and J. M. Synge.

James Joyce (1882-1941), the great 20th-century Irish writer, spent more than two decades in Dublin. Among his most important works are *A Portrait of the Artist as a Young Man*, *Ulysses* and *Finnegan's Wake*. The great orator and philosopher Edmund Burke was schooled just outside Dublin in a town

called Ballitore.

The late 19th-century poet Gerard Manley Hopkins is buried in the Glasnevin Cemetery on Dublin's north side. The author of *Gulliver's Travels*, Jonathan Swift was dean of Dublin's St. Patrick's Cathedral and is remembered with a memorial within the cathedral.

Samuel Beckett and Oscar Wilde, two well-respected authors, were both educated in the town of Enniskillen, which is in Northern Ireland. President John F. Kennedy's grandfather was born in a town called Dunganstown, in the southeastern section of Ireland, where some of the relatives still reside.

St. Patrick, Ireland's Patron Saint

St. Patrick lives in the hearts of every reveler who celebrates St. Patrick's Day on March 17th with a wearing of the green and a wee bit of merriment. St. Patrick was a 5th-century Briton who,

after being taken prisoner by the Irish and enslaved in the Northern Ireland town of Down, escaped to French soil and was converted to Christianity. With his newly found beliefs, St. Patrick returned to Ireland with the goal of converting the local leaders. His mission was well received and he is credited by most historians as the man who brought Catholicism to Ireland.

It is said that St. Patrick constructed his first church in Louth, just outside Dublin city proper. It is open to the public. Also outside Dublin, on the Hill of Tara, you'll find a statue dedicated to St. Patrick. Long may he be remembered as you celebrate his special day from this moment on, and wear the green that reminds you of this lush and richly beautiful country.

— Karyn L. Planett

For more information about what to do and see in Dublin please pick up a copy of our complimentary Port Description and local map at the Shore Excursions Desk.

風水

Today's Spa Promotions

Combine any two of the following treatments
for only \$119!



- 25-minute Relaxing Back Massage
- 25-minute Hydrating Mini Facial
- 25-minute Luxurious Foot & Ankle Massage
- 25-minute Frangipani Scalp, Neck & Shoulder Massage

Booked and received today only.

Crystal Spa & Salon

Shipboard credits may be used on all Spa and Salon services, gifts and products. For more information, please call 3875 or visit the Spa on Sun Deck 12 Aft. We suggest a 15% gratuity for Crystal Spa & Salon services, which may be added to your bill and charged to your shipboard account.



Crystal Adventures Shore Excursions Departure Times

All tours meet today according to the times listed below. For the comfort of all our guests, Crystal Cruises endorses a "no-tour announcement policy."

Morning Departures

DBL-F: Dublin City Highlights
Departs Starlite Club at 8:15am

**DBL-N: A Summer Drive Through
Ireland's Countryside**
Departs Starlite Club at 8:45am

DBL-L: Distinctly Dublin
Departs Starlite Club at 9:00am

**DBL-DV: Making A Difference: A
Morning at St. Joseph's Youth Club**
Departs Starlite Club at 9:15am

DBL-A: Panoramic Dublin
Departs Starlite Club at 9:30am

**DBL-B: Viking Adventure
by Amphibious Vehicle**
Departs Starlite Club at 9:45am

Afternoon Departures

DBL-J: A Tale of Two Gardens
Departs Starlite Club at 12:45pm

**DBL-G: Guinness Storehouse &
Old Jameson Distillery**
Departs Starlite Club at 1:15pm

DBL-C: Tea At Number 10
Departs Starlite Club at 1:45pm

Captain Ralf Zander and the Crystal Family wish a...

Happy Birthday to:

Dr. Bruce Solnick

Happy Anniversary to:

Mr. & Mrs. Francis & Lois Faber

Mr. & Mrs. Jim & Linda Flannery

Best Wishes!

PERSONALITY PROFILE

International Virtuoso Gary Arbuthnot

Irish Entertainer **Gary Arbuthnot** has captivated audiences throughout the world with his beautiful tone, flaw-



less technique and outstanding musicianship. Equally at home in the fields of classical, pop or jazz he has performed in many of the great musical halls including

the South Bank Centre, London, the Kennedy Centre, Washington and the Waterfront Hall, Belfast.

Voted Entertainer of the Year by Crystal Cruises for 2010, Gary was also a Prize-winner at both the Markneukirchen and Carl Nielsen International Flute Competitions, and was awarded the Meaker Fellowship from the Royal Academy of Music, London. Other prizes include the BBC Radio Three Young Artists Forum, an English-Speaking Union Scholarship, and awards from the Hattori Foundation, Countess of Munster Musical Trust, Claudio Abbado European Young Musicians Trust and the Foundation for Sport and the Arts.

Gary Arbuthnot was born in Antrim, Northern Ireland, and studied at the Royal Academy of Music, London, McGill University, Montreal, and privately with James Galway. He has worked as principal flute with the Royal Liverpool Philharmonic, the Opera de Lyon, France, the Sao Paulo State Symphony Orchestra, Brazil, and since 2002 has been performing his show "Music from the Stage and Screen" on board many of the World's Leading Cruise Lines.

Tonight's show encompasses works from pop and classical standards, through classic movie hits, to a few toe-tapping tunes from the Irish Isle.

**Gary Arbuthnot performs at 7:00pm
and 8:30pm in the Galaxy Lounge.**

PERSONALITY PROFILE

Avenue Saloon Pianist Mark Farris

Mark Farris began playing the piano and singing at the age of five, under the tutelage and guidance of his father, an



honored entertainer and teacher. His father is celebrating 45 years of entertaining audiences at the piano at Jim's Steakhouse in Peoria, Illinois. Mark

continued his training at the University of Illinois at Champaign-Urbana, earning a degree in Music Education.

Mark debuted professionally in 2000 at the popular Gentry Piano Bar of Chicago. In the decade since then, Mark has entertained at numerous venues throughout the city. Mark is the proud recipient of "Best Musician" from the *Chicago Free Press*. Mark also entertains in New York City, and has had the pleasure to play for such stars as Julie Andrews, Debbie Reynolds and Chita Rivera.

In addition to his American following, Mark has acquired fans from around the world – principally through his nightly shows on luxury cruise ships sailing the Caribbean, Central and South America, Hawaii, the North Atlantic, and the Baltic and Mediterranean Seas. He also plays private parties, corporate events and performs for the Walt Disney Corporation. For many of the past summers, Mark has been a featured entertainer at Montparnasse Piano Bar on the Greek Island of Mykonos.

His CD, entitled *Mark Farris: Fields of Gold* features everything from George Gershwin, Cole Porter and Jerome Kern to Sting and Elton John, to Broadway show favorites and is available at www.markfarris.com.

**Mark Farris performs at 10:15pm in the
Starlite Club.**

Dublin, Ireland, Arrival Information

Crystal Symphony is scheduled to dock at Ocean Pier, Berth 33, in Dublin, Ireland, at 6:30am today, Friday, September 7.

An announcement is made as soon as the ship is cleared by local authorities. We ask that you please do not crowd the gangway, but make yourself comfortable until you are free to proceed ashore.

When going ashore, please remember to carry your Guest Identification Key Card, as you must show it to the officer at the gangway when re-boarding the ship.

The distance from the pier to the center of Dublin is 5km (3.5 miles). Taxis are not readily available on the pier. The cost to town is approximately 15 Euros.

The unit of currency in Ireland is the Euro (€). The current exchange rate is approximately US\$1.00 = €0.78. Traveler's checks and credit cards are widely accepted. U.S. dollars, in general, are not accepted.

Crystal Cruises is pleased to provide a **complimentary shuttle service** from the Pier to the corner of Nassau and Kildare Streets in Dublin, operating from 9:00am

to 5:00pm every 30 minutes on the hour and half hour in each direction. The last shuttle from the city is at 5:00pm. Please note driving time is approximately 20 minutes each way.

Crystal Symphony sails for Akureyri, Iceland, at 6:00pm. Please be back on board by 5:30pm.



Tax Free Shopping

In certain European ports, you will find shops that participate in a special tax-free shopping system known as VAT or "Value-Added Tax," which is equivalent to what would generally be paid in the United States as sales tax. Because the taxes in Europe are high, large savings awaits the shopper when he or she is reimbursed for the taxes paid on European-purchased items.

Shops participating in the VAT system display signs stating that customers are entitled to a refund for items purchased in their shop.

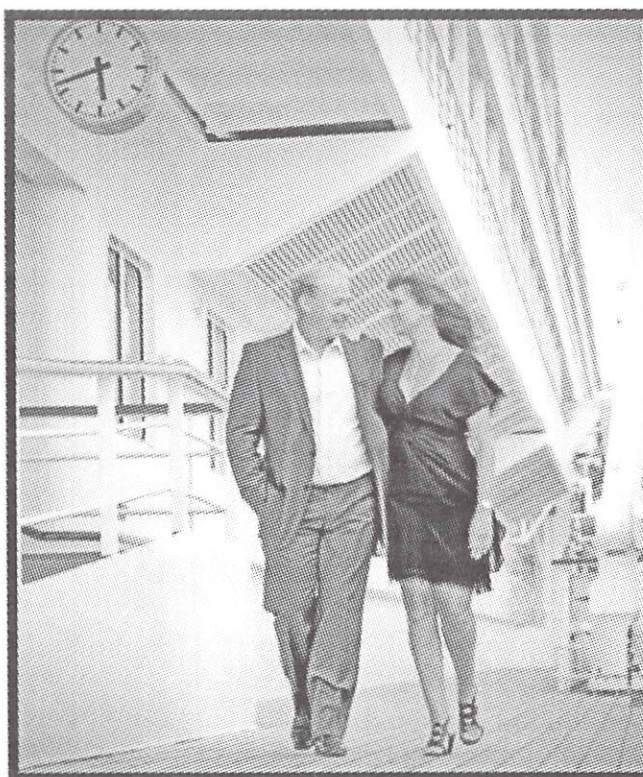
In such shops, you will receive a special

VAT refund certificate after purchasing goods. In order for you to claim your refund, you must have the special tax refund form.

A receipt from the shop alone is not sufficient. Please bear in mind that countries that allow tourists refunds on VAT usually have a minimum amount that must be spent in order to be eligible for a refund. To obtain a VAT refund certificate when making a purchase, you need a copy of your passport, or your passport number.

Since the beginning of 1995, the European Union (EU) member states have decided to remove all customs borders within the member countries. Therefore, you need only claim your VAT refund at the last EU airport / EU port before leaving the EU. VAT service personnel will board Crystal Symphony during our call to Dublin on Friday, September 7, 2012, and will be located in Crystal Plaza from 3:00pm to 5:30pm.

Problems that develop surrounding the VAT refund cannot be handled by the Reception Desk aboard Crystal Symphony as the VAT refund program is not in any way associated with Crystal Cruises.



THE Master COLLECTION

Featuring, on this cruise: **David MacDonald**

A master of light and capturing expression, David MacDonald has received numerous honors in the United Kingdom as well as internationally for his exceptional work. He is a Fellow of both the British Institute of Professional Photography (BIPP) and the Master Photographers Association (MPA).

- Available for appointments on this cruise
- Capture the moments of your special occasion
- Selected images presented in a hand-crafted, custom-bound album
- Appointment availability extremely limited; consult the Photo Shop for your exclusive portrait session
- Check *Reflections* for Photo Shop hours

Paragon
Pixels



Daytime Activities

Enjoy your day ashore in Dublin.

Good Morning

6:30am **Crystal Symphony is scheduled to dock at Dublin, Ireland.**
 The local Crystal Cruises' Port Representative for Dublin is the Hamilton Shipping (Port Services) Ltd.
 In the event of an emergency while ashore, please contact them at + 353.1.855.9011.

6:00am – 12 Noon	"The Morning Show" with your hosts Cruise Director Paul McFarland and Patricia Kent.	TV Channel 27	
7:30am★	Morning Walk on Water & Nordic Walking Program with Fitness Director Brian.	Promenade Deck Aft	7
8:00am	Catholic Mass is celebrated by Reverend Michael Lawlor.	Bridge Lounge	6
8:00am★	Fitness Class: <i>Stretch</i> with Fitness Director Neil.	Fitness Center	12
8:30am★	Fitness Class: <i>Abs</i> with Fitness Director Neil.	Fitness Center	12
9:00am – 12 Noon & 3:00pm – 6:00pm	The Library Is Open. Check out books, DVDs & CDs for your enjoyment during the cruise. Sign up for indoor games like chess, scrabble, mahjong, etc.	Library	6

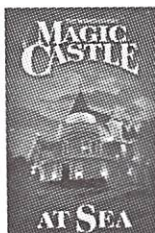
10:00am **Crew Emergency Muster** Guests are not involved in this drill, however, please note that guest services are interrupted for the duration of the drill. Ship Wide

11:00am **Paddle Tennis Open-Play** with Fitness Director Neil. (*weather permitting*) Wimbledon Court 12

Good Afternoon

2:15pm	Bridge Players meet for unhosted play.	Bridge Lounge	6
3:00pm	Table Tennis Open-Play with Fitness Director Neil.	Horizon Deck Aft	8
3:30pm – 4:30pm	Crystal Afternoon Tea Time serenaded by the Ginger String Quartet.	Palm Court	11
4:00pm★	Fitness Class: <i>Circuit</i> with Fitness Director Neil.	Fitness Center	12
4:30pm★	Fitness Class: <i>Stretch</i> with Fitness Director Neil.	Fitness Center	12
5:00pm	Friends of Bill W. meet in...	Lido Café Aft	11
5:00pm★	Afternoon Walk on Water & Nordic Walking Program with Fitness Director Neil.	Promenade Deck Aft	7
5:00pm	5 O'Clock Funnies LIVE! Comedy clips hosted by Cruise Director Paul McFarland.	TV Channel 27	
5:00pm	Sabbath Eve Service conducted by Rabbi Morris Hershman. All guests are welcome.	Hollywood Theatre	6

5:30pm **All guests on board, please.**
6:00pm **Crystal Symphony sails for Akureyri, Iceland.**



6:00pm & 7:00pm • LUXE Tiffany Deck 6, Midship

Magic Castle at Sea

Featuring Master Magician **Jonathan Levit**

This exclusive performance is limited to only 20 guests per show.

Please collect your ticket from the Library. Tickets are first come, first served.

Limited to two tickets per guest, please.

★ Indicates Creative Learning Institute Activity



Evening Entertainment Choices

Tonight's Dress Code throughout the ship for the entire evening after 6:00pm: **CASUAL**
Blouse and pants, casual dress, or pantsuit for the ladies.
Polo shirts or open collar long/short sleeved shirts with slacks for the gentlemen.

Crystal Cove

Crystal Deck 5, Midship

Brian Donnelly plays the Crystal piano
5:15pm – 6:15pm, 7:45pm – 8:45pm
& 10:30pm – 11:30pm

The Ginger String Quartet

serenades with classical music
7:00pm – 7:45pm & 9:30pm – 10:30pm

Hollywood Theatre

Tiffany Deck 6, Forward

8:15pm and 10:30pm

Movie: *Battleship*

A fleet of ships is forced to do battle with an armada of unknown origins in order to discover and thwart their destructive goals. Rated: PG-13: 2.12

Avenue Saloon

Tiffany Deck 6, Aft

6:45pm – 8:30pm • **Mark Farris** plays your favorite requests in our cozy bar.

11:30pm – 1:00am • **Mark Farris** sings and entertains at the piano. Come sing-along, or just sit back and enjoy!

Palm Court

Lido Deck 11, Forward

Dance with the **Crystal Sextet** and join the **Ambassador Hosts**.

5:15pm – 6:00pm and 7:45pm – 8:30pm

7:45pm: Solo & Unaccompanied Guests meet for a Get-Together

Starlite Club

Tiffany Deck 6, Midship

Dance the night away with the **Crystal Sextet** and the **Ambassador Hosts**.

9:30pm – 12:30am

LUXE

Tiffany Deck 6, Midship

Late Night Dancing

DJ Justice plays your favorite dance music from 10:00pm – Late

Starlite Club

Tiffany Deck 6, Midship



10:15pm Cabaret with Piano Entertainer

Mark Farris

Music from the Great American Songbook, Broadway & Hollywood!
Accompanied by **Sylvain LaFrance** on bass and **David Price** on percussion

7:00pm (Pre-Dinner Show for Late Seating) & **8:30pm** (After-Dinner Show for Main Seating)

Galaxy Lounge, Tiffany Deck 6 Forward

IN TOWN TONIGHT

Crystal Cruises proudly presents...



International Virtuoso

Gary Arbuthnot

"Music from the Stage and Screen"

Accompanied by the **Galaxy Orchestra Rhythm Section**

Vide/audio recording of this performance is strictly prohibited under international copyright law. In order to maximize our guests' enjoyment of this evening's performance, beverage service is discontinued 10 minutes after the start of the performance.

Paul's Late Night Smile: Before you criticize someone, you should walk a mile in their shoes. That way, when you criticize them, you're a mile away and you have their shoes. *For more smiles and chuckles, go to PaulMcFarland.com*



DIGITAL FILES PROMOTION

AVAILABLE NOW AT THE PHOTO SHOP

Enroll in the
Flash Memories
Program for only \$50*

*Then for every print purchased
we'll provide the digital file at
no extra cost.*



*On the last evening of the
cruise you will receive a 1GB
USB flash drive, with the digital
files of all the prints you have
purchased during your cruise.**

All digital files will be in JPEG
format.

You have the 'right to repro-
duce' images contained on your
flash drive, from your Crystal
Cruises voyage.

Should you have any questions
please contact the Photo Shop.
Ext 3869

*Valid for one voyage. Excludes stock
images, private commissions, and large
group images.

SHOPPING ON BOARD

Tomorrow

Autumn Clearance Extravaganza!



Clothing Items

Up to 75% Off

Visit the Apropos Shop for great
savings on clothing, jewellery, selected
perfumes, skincare, accessories and
logo items.

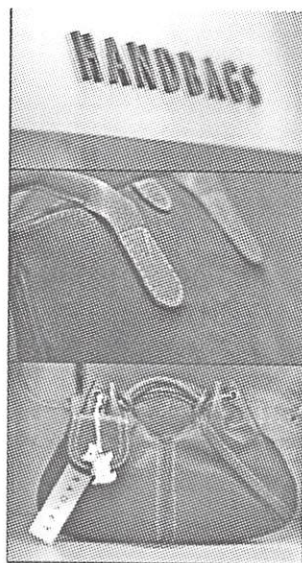
Open tomorrow 9:00pm – 9:00pm.

APROPOS FACETS

Crystal Collection

SHOPPING ON BOARD

Designer Handbags



Experience our quality handbag selection.

From the finest English leather with
original designs and exceptional
handcrafting...

to Nubuck leather and microfiber bags in
all sizes to meet all your needs.

View our exclusive collection of
Luxury European handbags,
crafted with the finest leather and materials.

APROPOS

Shipboard credits may be applied to all retail purchases.



Friday's Dining Hours

Breakfast

Lido Café, Lido Deck 11 Aft
Early-Bird Coffee (Port Side)
Early-Risers Buffet (Continental)
Breakfast Buffet

Crystal Dining Room, Crystal Deck 5 Midship
Breakfast (Open Seating)

The Bistro, Tiffany Deck 6 Midship
Late-Risers Coffee with Danish Pastries

Trident Grill, Lido Deck 11 Midship
Late-Risers Breakfast

Luncheon

Crystal Dining Room, Crystal Deck 5 Midship
Luncheon (Open Seating)

Lido Café, Lido Deck 11 Aft
Luncheon Buffet

Trident Grill, Lido Deck 11 Midship
Open for hamburgers, cheeseburgers, wraps and snacks

Ice Cream Bar, Lido Deck 11 Midship

The Bistro, Tiffany Deck 6 Midship
Bistro Snacks, Tarts and Pastries

Palm Court, Lido Deck 11 Forward
Crystal Afternoon Tea Time

Dinner

Crystal Dining Room, Crystal Deck 5 Midship

Dinner (Assigned Seating – Main Seating) 6:00pm
(Guests on Main Seating are kindly requested to be seated within the first 15 minutes)

Dinner (Assigned Seating – Late Seating) 8:30pm

Lido Café, Lido Deck 11 Aft

Casual Dinning (first-come, first-served basis) 7:00pm – 9:00pm

Prego, Tiffany Deck 6 Aft (Italian Cuisine) 6:00pm – 10:00pm

Silk Road, Tiffany Deck 6 Aft (Asian Cuisine by Nobu Matsuhisa) 6:00pm – 10:00pm

The Sushi Bar, Tiffany Deck 6 Aft (Cuisine by Nobu Matsuhisa)
8:00pm – 11:00pm

The Bistro, Tiffany Deck 6 Midship
Petit Desserts and Cheeses 8:00pm – 11:00pm

Late Night Gourmet Snacks

Avenue Saloon, LUXE and Starlite Club 11:30pm – 12:30am

Reservations for Silk Road and Prego: For your convenience, reservations can be made for these specialty restaurants by dialing 3854 or 0 anytime. If you'd prefer to make reservations in person, Maître d' **Paolo Alario** is available in Prego, Tiffany Deck 6 Aft, today from 5:00pm to 6:00pm. No reservations are required for **The Sushi Bar**; seating is based on a first-come, first-served basis.

Friday's Bar Hours

Avenue Saloon	5:00pm – Late
The Bistro	9:00am – 11:00pm
Connoisseur Club	5:00pm – Late
Crystal Cove	10:00am – 11:30pm
LUXE	10:00pm – Late
Palm Court	3:30pm – 10:00pm
Starlite Club	5:30pm – 12:30am
Trident Bar	10:00am – 6:00pm



Today's Cocktail Suggestion

Nutty Irishman

Enjoy this tasty combination.

Frangelico, Baileys and Fresh Cream.

Available in all our bars and lounges.

Printed on Recycled Paper



Casual Night

5:00am – 6:00am

6:00am – 7:00am

7:00am – 10:00am

7:00am – 9:00am

9:00am – 11:30am

10:00am – 11:00am

12 Noon – 1:30pm

12 Noon – 1:30pm

11:30am – 6:00pm

11:00am – 6:00pm

11:30am – 6:00pm

3:30pm – 4:30pm

Avenue of the Stars Boutiques:

Tiffany Deck 6 Midship

Apropos, Crystal Collection and Facets

Open from 6:00pm to 10:00pm.

Crystal Casino, Tiffany Deck 6 Forward

Slots: Open 7:00pm to 2:00am

Table Games: Open 8:00pm to 2:00am
Guests must be 21 or older to participate in monetary-based games of chance.

Computer University@Sea, Tiffany Deck

Open 24 hours. Technology Concierges
available from 7:00am to 11:00pm.

Keyboards available for the sight-impaired.

Concierge Desk, Crystal Deck 5 Midship

Open daily 7:30am to 7:30pm.

Cruise Sales Consultant, Crystal Deck 5

Paula Jean Pfitzer is at her desk from 9:00am
to 11:00am and 4:30pm to 5:30pm.

Crystal Society Hostess, Crystal Deck 5

Jaque Brown is at her desk from 9:00am
to 11:00am and 4:30pm to 5:30pm.

Crystal Spa & Salon, Sun Deck 12 Aft

Open 8:00am to 8:00pm including the
men's and ladies' Sauna and Steam Room;
phone 3875. Please note that appointments
are available at your request until 10:00pm.

Crystal Spa Fitness Center, Aerobics

Studio & Weight Room, Sun Deck 12 Aft

Open 24 hours. Attendant is on duty
7:30am to 8:00pm. Our Fitness Directors
are available for personal training sessions.

Library, Tiffany Deck 6 Midship

Open today 9:00am to 12 Noon, 3:00pm
to 6:00pm and 7:30pm to 11:00pm.

Check out books, DVDs and CDs for
your enjoyment during the cruise.

Medical Center, Crystal Deck 5 Forward

Located just forward of Reception Desk on
the starboard side. Open 8:00am to
12 Noon and 2:00pm to 6:00pm.

Doctor's Consultation Hours: 9:00am to
10:00am; 5:00pm to 6:00pm.

Medical attention (24 hours) dial 9911.
In an extreme emergency call **3333**.

Photo Shop, Tiffany Deck 6.

Open 6:00pm to 10:30pm.

Shore Excursions Desk, Crystal Deck 5

Open today from 7:00am to 7:45am,
11:00am to 12:30pm and 5:00pm to 7:00pm.